

ORCTL-2 Antibody

Catalog No: #34024

Package Size: #34024-1 50ul #34024-2 100ul

Orders: order@signalwayantibody.comSupport: tech@signalwayantibody.com

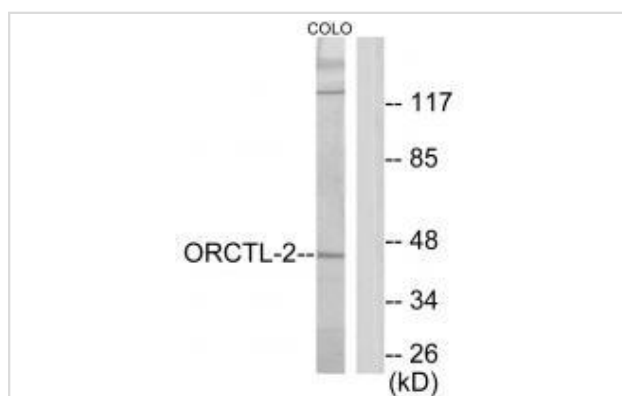
Description

Product Name	ORCTL-2 Antibody
Host Species	Rabbit
Clonality	Polyclonal
Purification	The antibody was affinity-purified from rabbit antiserum by affinity-chromatography using epitope-specific immunogen.
Applications	WB
Species Reactivity	Hu
Specificity	The antibody detects endogenous levels of total ORCTL-2 protein.
Immunogen Type	Peptide
Immunogen Description	Synthesized peptide derived from C-terminal of human ORCTL-2.
Target Name	ORCTL-2
Other Names	Solute carrier family 22 member 18; Organic cation transporter-like protein 2; ORCTL-2; Imprinted multi-membrane spanning polyspecific transporter-related protein 1; Efflux transporter-like protein
Accession No.	Swiss-Prot: Q96BI1NCBI Gene ID: 5002
Uniprot	Q96BI1
GeneID	5002;
SDS-PAGE MW	43kd
Concentration	1.0mg/ml
Formulation	Rabbit IgG in phosphate buffered saline (without Mg ²⁺ and Ca ²⁺), pH 7.4, 150mM NaCl, 0.02% sodium azide and 50% glycerol.
Storage	Store at -20°C

Application Details

Western blotting: 1:500~1:3000

Images



Western blot analysis of extracts from COLO205 cells, using ORCTL-2 antibody #34024.

Background

May act as a transporter of organic cations based on a proton efflux antiport mechanism. May play a role in the transport of chloroquine and quinidine-related compounds in kidney.

Lee M.P., Cancer Res. 58:4155-4159(1998).

Morisaki H., DNA Res. 5:235-240(1998).

Cooper P.R., Genomics 49:38-51(1998).

Note: This product is for in vitro research use only