

HES6 Antibody

Catalog No: #34030

Package Size: #34030-1 50ul #34030-2 100ul

Orders: order@signalwayantibody.comSupport: tech@signalwayantibody.com

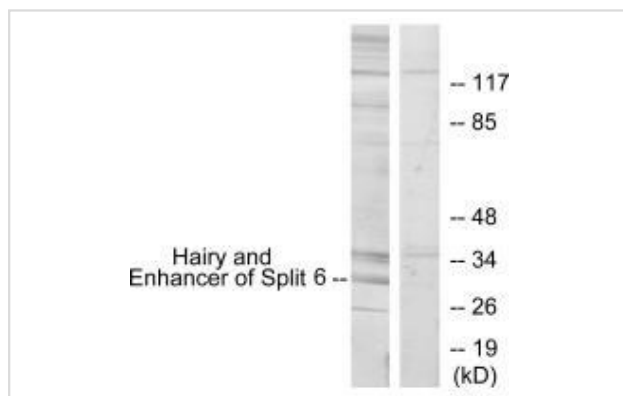
Description

Product Name	HES6 Antibody
Host Species	Rabbit
Clonality	Polyclonal
Purification	The antibody was affinity-purified from rabbit antiserum by affinity-chromatography using epitope-specific immunogen.
Applications	WB
Species Reactivity	Hu
Specificity	The antibody detects endogenous levels of total HES6.
Immunogen Type	Peptide
Immunogen Description	Synthesized peptide derived from N-terminal of human HES6.
Target Name	HES6
Other Names	Transcription cofactor HES-6; Hairy and enhancer of split 6; C-HAIRY1; HES6;
Accession No.	Swiss-Prot: Q96HZ4NCBI Gene ID: 55502
Uniprot	Q96HZ4
GeneID	55502;
SDS-PAGE MW	30kd
Concentration	1.0mg/ml
Formulation	Rabbit IgG in phosphate buffered saline (without Mg ²⁺ and Ca ²⁺), pH 7.4, 150mM NaCl, 0.02% sodium azide and 50% glycerol.
Storage	Store at -20°C

Application Details

Western blotting: 1:500~1:3000

Images



Western blot analysis of extracts from HeLa cells, using HES6 antibody #34030.

Background

Does not bind DNA itself but suppresses both HES1-mediated N box-dependent transcriptional repression and binding of HES1 to E box sequences. Also suppresses HES1-mediated inhibition of the heterodimer formed by ASCL1/MASH1 and TCF3/E47, allowing ASCL1 and TCF3 to up-regulate transcription in its presence. Promotes cell differentiation By similarity. UniProtKB Q9JHE6

Bae S.-K., Development 127:2933-2943(2000).

Vasiliauskas D., Mech. Dev. 98:133-137(2000).

Ota T., Nat. Genet. 36:40-45(2004).

Note: This product is for in vitro research use only