

ADPGK Antibody

Catalog No: #34043

Package Size: #34043-1 50ul #34043-2 100ul

Orders: order@signalwayantibody.comSupport: tech@signalwayantibody.com

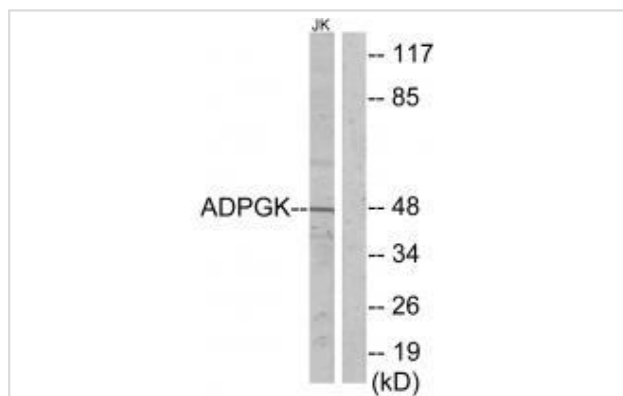
Description

Product Name	ADPGK Antibody
Host Species	Rabbit
Clonality	Polyclonal
Purification	The antibody was affinity-purified from rabbit antiserum by affinity-chromatography using epitope-specific immunogen.
Applications	WB
Species Reactivity	Hu Ms Rt
Specificity	The antibody detects endogenous levels of total ADPGK protein.
Immunogen Type	Peptide
Immunogen Description	Synthesized peptide derived from internal of human ADPGK.
Target Name	ADPGK
Other Names	ADP-dependent glucokinase; EC 2.7.1.147; ADPGK; ADP-GK; RbBP-35
Accession No.	Swiss-Prot: Q9BRR6NCBI Gene ID: 83440
Uniprot	Q9BRR6
GeneID	83440;
SDS-PAGE MW	47kd
Concentration	1.0mg/ml
Formulation	Rabbit IgG in phosphate buffered saline (without Mg ²⁺ and Ca ²⁺), pH 7.4, 150mM NaCl, 0.02% sodium azide and 50% glycerol.
Storage	Store at -20°C

Application Details

Western blotting: 1:500~1:3000

Images



Western blot analysis of extracts from Jurkat cells, using ADPGK antibody #34043.

Background

Catalyzes the phosphorylation of D-glucose to D-glucose 6-phosphate using ADP as the phosphate donor. GDP and CDP can replace ADP, but with reduced efficiency By similarity.

Wiemann S., Genome Res. 11:422-435(2001).

Ota T., Nat. Genet. 36:40-45(2004).

The MGC Project Team, Genome Res. 14:2121-2127(2004).

Note: This product is for in vitro research use only