

DUSP16 Antibody

Catalog No: #34049

Package Size: #34049-1 50ul #34049-2 100ul

Orders: order@signalwayantibody.comSupport: tech@signalwayantibody.com

Description

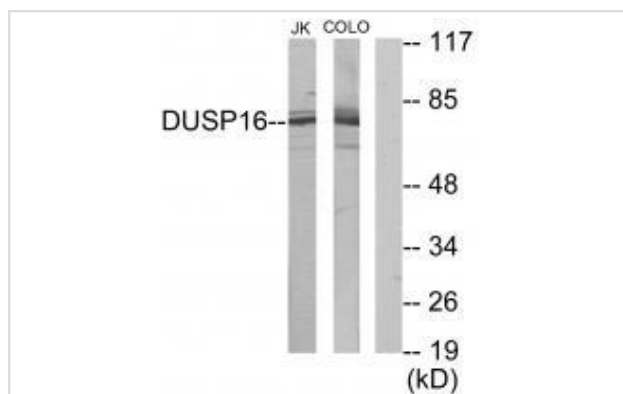
Product Name	DUSP16 Antibody
Host Species	Rabbit
Clonality	Polyclonal
Purification	The antibody was affinity-purified from rabbit antiserum by affinity-chromatography using epitope-specific immunogen.
Applications	WB IF
Species Reactivity	Hu Ms
Specificity	The antibody detects endogenous levels of total DUSP16 protein.
Immunogen Type	Peptide
Immunogen Description	Synthesized peptide derived from internal of human DUSP16.
Target Name	DUSP16
Other Names	Dual specificity protein phosphatase 16; EC 3.1.3.48; EC 3.1.3.16; Mitogen-activated protein kinase phosphatase 7; MAP kinase phosphatase 7
Accession No.	Swiss-Prot: Q9BYG9NCBI Gene ID: 80824
Uniprot	Q9BY84
GeneID	80824;
SDS-PAGE MW	73kd
Concentration	1.0mg/ml
Formulation	Rabbit IgG in phosphate buffered saline (without Mg ²⁺ and Ca ²⁺), pH 7.4, 150mM NaCl, 0.02% sodium azide and 50% glycerol.
Storage	Store at -20°C

Application Details

Western blotting: 1:500~1:3000

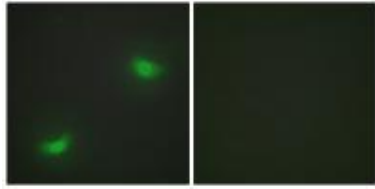
Immunofluorescence: 1:100~1:500

Images



Western blot analysis of extracts from Jurkat cells and COLO205 cells, using DUSP16 antibody #34049.

Immunofluorescence analysis of HepG2 cells, using DUSP16 antibody #34049.



Background

This gene encodes a mitogen-activated protein kinase phosphatase that is a member of the dual specificity protein phosphatase subfamily. These phosphatases inactivate their target kinases by dephosphorylating both the phosphoserine/threonine and phosphotyrosine residues. The encoded protein specifically regulates the c-Jun amino-terminal kinase (JNK) and extracellular signal-regulated kinase (ERK) pathways.

Masuda K., J. Biol. Chem. 276:39002-39011(2001).

Hoornaert I., Oncogene 22:7728-7736(2003).

Nagase T., DNA Res. 7:347-355(2000).

Note: This product is for in vitro research use only