

YTHDF1 Antibody

Catalog No: #34050

Package Size: #34050-1 50ul #34050-2 100ul

Orders: order@signalwayantibody.comSupport: tech@signalwayantibody.com

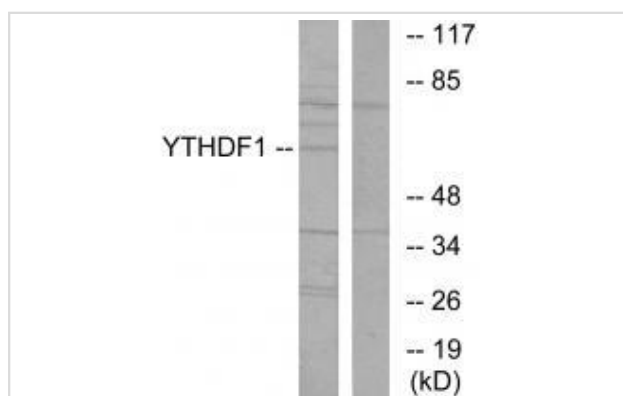
Description

Product Name	YTHDF1 Antibody
Host Species	Rabbit
Clonality	Polyclonal
Purification	The antibody was affinity-purified from rabbit antiserum by affinity-chromatography using epitope-specific immunogen.
Applications	WB
Species Reactivity	Hu Ms Rt
Specificity	The antibody detects endogenous levels of total YTHDF1 protein.
Immunogen Type	Peptide
Immunogen Description	Synthesized peptide derived from N-terminal of human YTHDF1.
Target Name	YTHDF1
Other Names	YTH domain family protein 1; Dermatomyositis associated with cancer putative autoantigen 1; DACA-1; YTHDF1; C20orf21
Accession No.	Swiss-Prot: Q9BYJ9NCBI Gene ID: 54915
Uniprot	Q9BYJ9
GeneID	54915;
SDS-PAGE MW	61kd
Concentration	1.0mg/ml
Formulation	Rabbit IgG in phosphate buffered saline (without Mg ²⁺ and Ca ²⁺), pH 7.4, 150mM NaCl, 0.02% sodium azide and 50% glycerol.
Storage	Store at -20°C

Application Details

Western blotting: 1:500~1:3000

Images



Western blot analysis of extracts from 293 cells, using YTHDF1 antibody #34050.

Background

Specifically recognizes and binds N6-methyladenosine (m6A)-containing RNAs. M6A is a modification present at internal sites of mRNAs and some non-coding RNAs and plays a role in the efficiency of mRNA splicing, processing and stability.

Ota T., Nat. Genet. 36:40-45(2004).

Deloukas P., Nature 414:865-871(2001).

The MGC Project Team, Genome Res. 14:2121-2127(2004).

Note: This product is for in vitro research use only