

## IRX2 Antibody

Catalog No: #34053

Package Size: #34053-1 50ul #34053-2 100ul

Orders: [order@signalwayantibody.com](mailto:order@signalwayantibody.com)Support: [tech@signalwayantibody.com](mailto:tech@signalwayantibody.com)

## Description

Product Name	IRX2 Antibody
Host Species	Rabbit
Clonality	Polyclonal
Purification	The antibody was affinity-purified from rabbit antiserum by affinity-chromatography using epitope-specific immunogen.
Applications	WB IHC IF
Species Reactivity	Hu
Specificity	The antibody detects endogenous levels of total IRX2 protein.
Immunogen Type	Peptide
Immunogen Description	Synthesized peptide derived from internal of human IRX2.
Target Name	IRX2
Other Names	Iroquois-class homeodomain protein IRX-2; Iroquois homeobox protein 2; Homeodomain protein IRXA2; IRX2; IRXA2
Accession No.	Swiss-Prot: Q9BZ11NCBI Gene ID: 153572
Uniprot	Q9BZ11
GeneID	153572;
SDS-PAGE MW	50kd
Concentration	1.0mg/ml
Formulation	Rabbit IgG in phosphate buffered saline (without Mg <sup>2+</sup> and Ca <sup>2+</sup> ), pH 7.4, 150mM NaCl, 0.02% sodium azide and 50% glycerol.
Storage	Store at -20°C

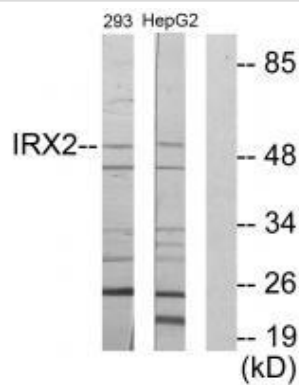
## Application Details

Western blotting: 1:500~1:3000

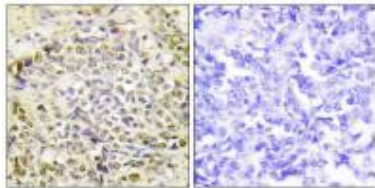
Immunohistochemistry: 1:50~1:100

Immunofluorescence: 1:100~1:500

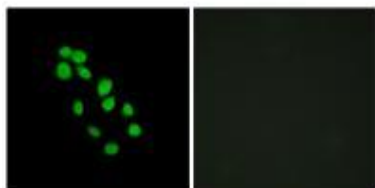
## Images



Western blot analysis of extracts from 293 cells and HepG2 cells, using IRX2 antibody #34053.



Immunohistochemistry analysis of paraffin-embedded human lung carcinoma tissue using IRX2 antibody #34053.



Immunofluorescence analysis of HepG2 cells, using IRX2 antibody #34053.

## Background

IRX2 is a member of the Iroquois homeobox gene family. Members of this family appear to play multiple roles during pattern formation of vertebrate embryos.[supplied by OMIM, Apr 2004]

Hansen L., Submitted (JUL-2003) to the EMBL/GenBank/DDBJ databases.

The MGC Project Team, Genome Res. 14:2121-2127(2004).

Ogura K., Cytogenet. Cell Genet. 92:320-325(2001).

Note: This product is for in vitro research use only