

CD44 Antibody

Catalog No: #21471

Package Size: #21471-1 50ul #21471-2 100ul

Orders: order@signalwayantibody.comSupport: tech@signalwayantibody.com

Description

Product Name	CD44 Antibody
Host Species	Rabbit
Clonality	Polyclonal
Purification	Antibodies were produced by immunizing rabbits with synthetic peptide and KLH conjugates. Antibodies were purified by affinity-chromatography using epitope-specific peptide.
Applications	WB IF
Species Reactivity	Hu
Specificity	The antibody detects endogenous level of total CD44 protein.
Immunogen Type	Peptide-KLH
Immunogen Description	Peptide sequence around aa.734~738(Q-N-V-D-M) derived from Human CD44.
Target Name	CD44
Other Names	LHR; MDU2; MDU3; MIC4;
Accession No.	Swiss-Prot: P16070NCBI Protein: NP_000601.3
Uniprot	P16070
GeneID	960;
Concentration	1.0mg/ml
Formulation	Supplied at 1.0mg/mL in phosphate buffered saline (without Mg ²⁺ and Ca ²⁺), pH 7.4, 150mM NaCl, 0.02% sodium azide and 50% glycerol.
Storage	Store at -20°C for long term preservation (recommended). Store at 4°C for short term use.

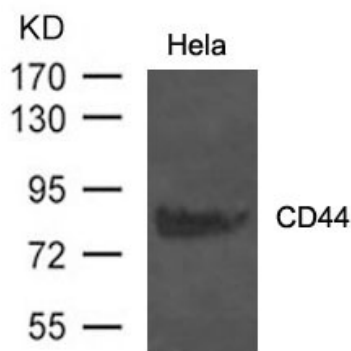
Application Details

Predicted MW: 80kd

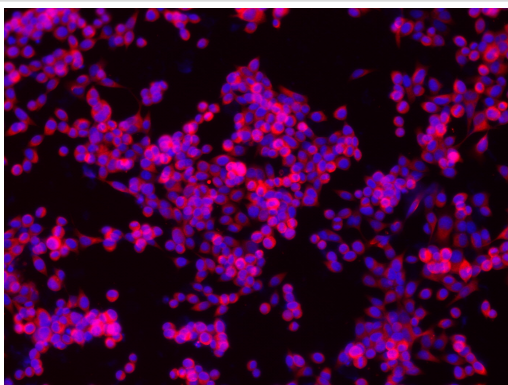
Western blotting: 1:500~1:1000

Immunofluorescence: 1:100~1:200

Images



Western blot analysis of extract from HeLa cells using CD44 Antibody #21471



Immunofluorescence staining of methanol-fixed NCI-h446 cells showing cytoplasmic staining using CD44 Antibody #21471.

Background

Receptor for hyaluronic acid (HA). Mediates cell-cell and cell-matrix interactions through its affinity for HA, and possibly also through its affinity for other ligands such as osteopontin, collagens, and matrix metalloproteinases (MMPs). Adhesion with HA plays an important role in cell migration, tumor growth and progression. Also involved in lymphocyte activation, recirculation and homing, and in hematopoiesis. Altered expression or dysfunction causes numerous pathogenic phenotypes. Great protein heterogeneity due to numerous alternative splicing and post-translational modification events.

Teriete P., et.al (2004) Mol. Cell 13:483-496 Bartolazzi A. (2003) Melanoma Res. 13:325-337

Liu T. et.al (2005) J. Proteome Res. 4:2070-2080

Note: This product is for in vitro research use only