

CKI-γ1 Antibody

Catalog No: #34073

Package Size: #34073-1 50ul #34073-2 100ul

Orders: order@signalwayantibody.comSupport: tech@signalwayantibody.com

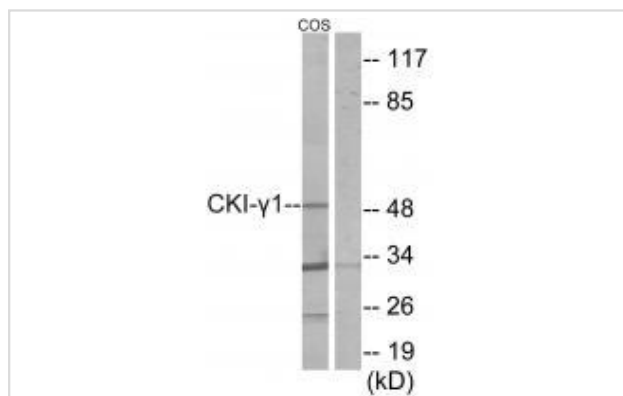
Description

Product Name	CKI-γ1 Antibody
Host Species	Rabbit
Clonality	Polyclonal
Purification	The antibody was affinity-purified from rabbit antiserum by affinity-chromatography using epitope-specific immunogen.
Applications	WB
Species Reactivity	Hu Ms Rt
Specificity	The antibody detects endogenous levels of total CKI-γ1 protein.
Immunogen Type	Peptide
Immunogen Description	Synthesized peptide derived from N-terminal of human CKI-γ1.
Target Name	CKI-γ1
Other Names	EC 2.7.11.1; CKI-gamma 1; Casein kinase I isoform gamma-1; CSNK1G1;
Accession No.	Swiss-Prot: Q9HCP0NCBI Gene ID: 53944
Uniprot	Q9HCP0
GeneID	53944;
SDS-PAGE MW	49kd
Concentration	1.0mg/ml
Formulation	Rabbit IgG in phosphate buffered saline (without Mg ²⁺ and Ca ²⁺), pH 7.4, 150mM NaCl, 0.02% sodium azide and 50% glycerol.
Storage	Store at -20°C

Application Details

Western blotting: 1:500~1:3000

Images



Western blot analysis of extracts from COS-7 cells, using CKI-γ1 antibody #34073.

Background

Serine/threonine-protein kinase. Casein kinases are operationally defined by their preferential utilization of acidic proteins such as caseins as substrates. It can phosphorylate a large number of proteins. Participates in Wnt signaling. Regulates fast synaptic transmission mediated by glutamate. By similarity. Phosphorylates CLSPN.

Kusuda J., Cytogenet. Cell Genet. 90:298-302(2000).

The MGC Project Team, Genome Res. 14:2121-2127(2004).

Hillman R.T., Genome Biol. 5:RESEARCH008.1-RESEARCH008.16(2004).

Note: This product is for in vitro research use only