

DOK5 Antibody

Catalog No: #34089

Package Size: #34089-1 50ul #34089-2 100ul

Orders: order@signalwayantibody.comSupport: tech@signalwayantibody.com

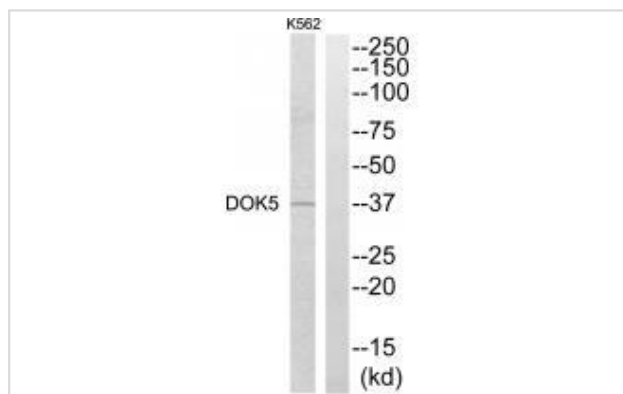
Description

Product Name	DOK5 Antibody
Host Species	Rabbit
Clonality	Polyclonal
Purification	The antibody was affinity-purified from rabbit antiserum by affinity-chromatography using epitope-specific immunogen.
Applications	WB
Species Reactivity	Hu
Specificity	The antibody detects endogenous levels of total DOK5 protein.
Immunogen Type	Peptide
Immunogen Description	Synthesized peptide derived from internal of human DOK5.
Target Name	DOK5
Other Names	Docking protein 5; Downstream of tyrosine kinase 5; Insulin receptor substrate 6; IRS-6; IRS6
Accession No.	Swiss-Prot: Q9P104NCBI Gene ID: 55816
Uniprot	Q9P104
GeneID	55816;
SDS-PAGE MW	36kd
Concentration	1.0mg/ml
Formulation	Rabbit IgG in phosphate buffered saline (without Mg ²⁺ and Ca ²⁺), pH 7.4, 150mM NaCl, 0.02% sodium azide and 50% glycerol.
Storage	Store at -20°C

Application Details

Western blotting: 1:500~1:3000

Images



Western blot analysis of extracts from K562 cells, using DOK5 antibody #34089.

Background

DOK proteins are enzymatically inert adaptor or scaffolding proteins. They provide a docking platform for the assembly of multimolecular signaling complexes. DOK5 functions in RET-mediated neurite outgrowth and plays a positive role in activation of the MAP kinase pathway. Putative link with downstream effectors of RET in neuronal differentiation.

Luo W.Q., Submitted (MAR-1999) to the EMBL/GenBank/DDBJ databases.

Favre C., Genes Immun. 4:40-45(2003).

Cai D., J. Biol. Chem. 278:25323-25330(2003).

Note: This product is for in vitro research use only