

DBF4 Antibody

Catalog No: #34095

Package Size: #34095-1 50ul #34095-2 100ul

Orders: order@signalwayantibody.com

Support: tech@signalwayantibody.com

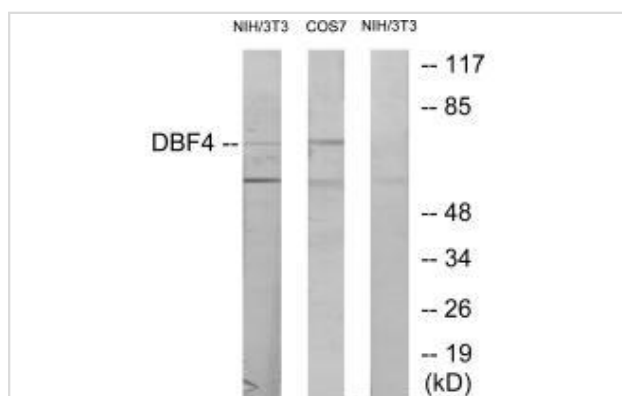
Description

Product Name	DBF4 Antibody
Host Species	Rabbit
Clonality	Polyclonal
Purification	The antibody was affinity-purified from rabbit antiserum by affinity-chromatography using epitope-specific immunogen.
Applications	WB
Species Reactivity	Hu Ms
Specificity	The antibody detects endogenous levels of total DBF4 protein.
Immunogen Type	Peptide
Immunogen Description	Synthesized peptide derived from N-terminal of human DBF4.
Target Name	DBF4
Other Names	Protein DBF4 homolog A; Activator of S phase kinase; DBF4-type zinc finger-containing protein 1; Chiffon homolog A; DBF4
Accession No.	Swiss-Prot: Q9UBU7NCBI Gene ID: 10926
Uniprot	Q9UBU7
GeneID	10926;
SDS-PAGE MW	77kd
Concentration	1.0mg/ml
Formulation	Rabbit IgG in phosphate buffered saline (without Mg ²⁺ and Ca ²⁺), pH 7.4, 150mM NaCl, 0.02% sodium azide and 50% glycerol.
Storage	Store at -20°C

Application Details

Western blotting: 1:500~1:3000

Images



Western blot analysis of extracts from NIH-3T3 cells treated with H₂O₂ (100uM, 30mins) and COS-7 cells treated with PMA (125mg/ml, 30mins), using DBF4 antibody #34095.

Background

Regulatory subunit for CDC7 which activates its kinase activity thereby playing a central role in DNA replication and cell proliferation. Required for progression of S phase. The complex CDC7-DBF4A selectively phosphorylates MCM2 subunit at 'Ser-40' and 'Ser-53' and then is involved in regulating the initiation of DNA replication during cell cycle.

Kumagai H., Mol. Cell. Biol. 19:5083-5095(1999).

Jiang W., EMBO J. 18:5703-5713(1999).

Ota T., Nat. Genet. 36:40-45(2004).

Note: This product is for in vitro research use only