

KLHL3 Antibody

Catalog No: #34101

Package Size: #34101-1 50ul #34101-2 100ul

Orders: order@signalwayantibody.com

Support: tech@signalwayantibody.com

Description

| | |
|-----------------------|--|
| Product Name | KLHL3 Antibody |
| Host Species | Rabbit |
| Clonality | Polyclonal |
| Purification | The antibody was affinity-purified from rabbit antiserum by affinity-chromatography using epitope-specific immunogen. |
| Applications | WB IHC IF |
| Species Reactivity | Hu Ms |
| Specificity | The antibody detects endogenous levels of total KLHL3 protein. |
| Immunogen Type | Peptide |
| Immunogen Description | Synthesized peptide derived from N-terminal of human KLHL3. |
| Target Name | KLHL3 |
| Other Names | Kelch-like protein 3; KIAA1129; |
| Accession No. | Swiss-Prot: Q9UH77/Q8N4I8NCBI Gene ID: 26249 |
| Uniprot | Q9UH77 |
| GeneID | 26249; |
| SDS-PAGE MW | 65kd |
| Concentration | 1.0mg/ml |
| Formulation | Rabbit IgG in phosphate buffered saline (without Mg ²⁺ and Ca ²⁺), pH 7.4, 150mM NaCl, 0.02% sodium azide and 50% glycerol. |
| Storage | Store at -20°C |

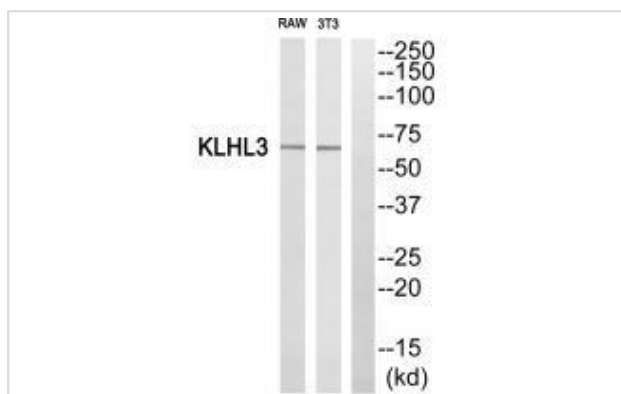
Application Details

Western blotting: 1:500~1:3000

Immunohistochemistry: 1:50~1:100

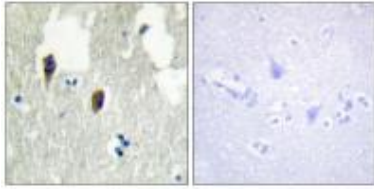
Immunofluorescence: 1:100~1:500

Images

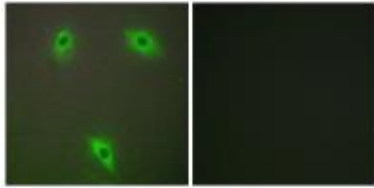


Western blot analysis of extracts from RAW264.7 cells and 3T3 cells, using KLHL3 antibody #34101.

Immunohistochemistry analysis of paraffin-embedded human brain tissue, using KLHL3 antibody #34101.



Immunofluorescence analysis of A549 cells, using KLHL3 antibody #34101.



Background

Substrate-specific adapter of a BCR (BTB-CUL3-RBX1) E3 ubiquitin ligase complex that acts as a regulator of ion transport in the distal nephron. The BCR(KLHL3) complex acts by mediating ubiquitination of WNK4, an inhibitor of potassium channel KCNJ1, leading to WNK4 degradation.

Lai F., *Genomics* 66:65-75(2000).

Hirosawa M., *DNA Res.* 6:329-336(1999).

Ota T., *Nat. Genet.* 36:40-45(2004).

Note: This product is for in vitro research use only