

## STAG3 Antibody

Catalog No: #34109

Package Size: #34109-1 50ul #34109-2 100ul

Orders: [order@signalwayantibody.com](mailto:order@signalwayantibody.com)Support: [tech@signalwayantibody.com](mailto:tech@signalwayantibody.com)

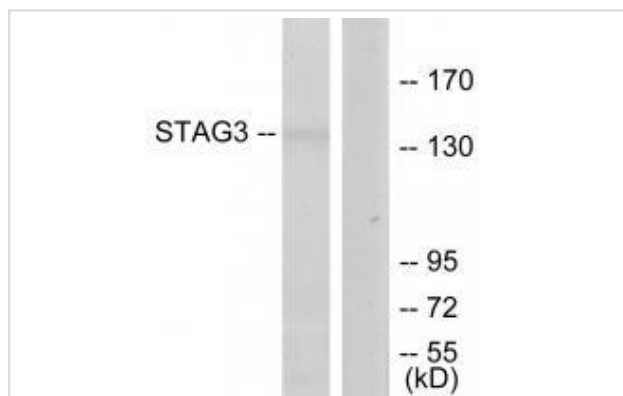
## Description

Product Name	STAG3 Antibody
Host Species	Rabbit
Clonality	Polyclonal
Purification	The antibody was affinity-purified from rabbit antiserum by affinity-chromatography using epitope-specific immunogen.
Applications	WB
Species Reactivity	Hu
Specificity	The antibody detects endogenous levels of total STAG3 protein.
Immunogen Type	Peptide
Immunogen Description	Synthesized peptide derived from C-terminal of human STAG3.
Target Name	STAG3
Other Names	Cohesin subunit SA-3; Stromal antigen 3; Stromalin 3; SCC3 homolog 3; STAG3
Accession No.	Swiss-Prot: Q9UJ98NCBI Gene ID: 10734
Uniprot	Q9UJ98
GeneID	10734;
SDS-PAGE MW	139kd
Concentration	1.0mg/ml
Formulation	Rabbit IgG in phosphate buffered saline (without Mg <sup>2+</sup> and Ca <sup>2+</sup> ), pH 7.4, 150mM NaCl, 0.02% sodium azide and 50% glycerol.
Storage	Store at -20°C

## Application Details

Western blotting: 1:500~1:3000

## Images



Western blot analysis of extracts from Jurkat cells, using STAG3 antibody #34109.

## Background

Meiosis specific component of cohesin complex. The cohesin complex is required for the cohesion of sister chromatids after DNA replication. The cohesin complex apparently forms a large proteinaceous ring within which sister chromatids can be trapped. At anaphase, the complex is cleaved and dissociates from chromatin, allowing sister chromatids to segregate. The meiosis-specific cohesin complex probably replaces mitosis specific cohesin complex when it dissociates from chromatin during prophase I By similarity.

Pezzi N., FASEB J. 14:581-592(2000).

The German cDNA consortium; Submitted (JUL-2002) to the EMBL/GenBank/DDBJ databases.

Prieto I., EMBO Rep. 3:543-550(2002).

---

Note: This product is for in vitro research use only