

PKCB1 Antibody

Catalog No: #34116

Package Size: #34116-1 50ul #34116-2 100ul

Orders: order@signalwayantibody.comSupport: tech@signalwayantibody.com

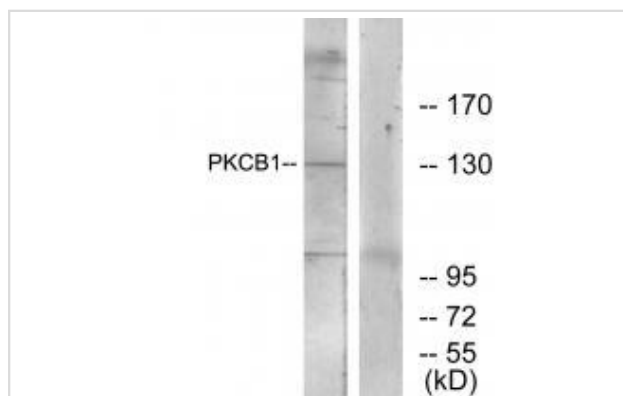
Description

Product Name	PKCB1 Antibody
Host Species	Rabbit
Clonality	Polyclonal
Purification	The antibody was affinity-purified from rabbit antiserum by affinity-chromatography using epitope-specific immunogen.
Applications	WB
Species Reactivity	Hu
Specificity	The antibody detects endogenous levels of total PKCB1 protein.
Immunogen Type	Peptide
Immunogen Description	Synthesized peptide derived from internal of human PKCB1.
Target Name	PKCB1
Other Names	CTCL tumor antigen se14-3; Cutaneous T-cell lymphoma associated antigen se14-3; KIAA1125; PKCB; PKCB1
Accession No.	Swiss-Prot: Q9ULU4NCBI Gene ID: 23613
Uniprot	Q9ULU4
GeneID	23613;
SDS-PAGE MW	132kd
Concentration	1.0mg/ml
Formulation	Rabbit IgG in phosphate buffered saline (without Mg ²⁺ and Ca ²⁺), pH 7.4, 150mM NaCl, 0.02% sodium azide and 50% glycerol.
Storage	Store at -20°C

Application Details

Western blotting: 1:500~1:3000

Images



Western blot analysis of extracts from 293 cells, using PKCB1 antibody #34116.

Background

The protein encoded by this gene is a receptor for activated C-kinase (RACK) protein. The encoded protein has been shown to bind in vitro to activated protein kinase C beta I. In addition, this protein is a cutaneous T-cell lymphoma-associated antigen. Finally, the protein contains a bromodomain and two zinc fingers, and is thought to be a transcriptional regulator. Multiple transcript variants encoding several different isoforms have been found for this gene.

Fossey S.C., Mamm. Genome 11:919-925(2000).

Eichmueller S., Proc. Natl. Acad. Sci. U.S.A. 98:629-634(2001).

Deloukas P., Nature 414:865-871(2001).

Note: This product is for in vitro research use only