

ATF5 Antibody

Catalog No: #34127

Package Size: #34127-1 50ul #34127-2 100ul

Orders: order@signalwayantibody.comSupport: tech@signalwayantibody.com

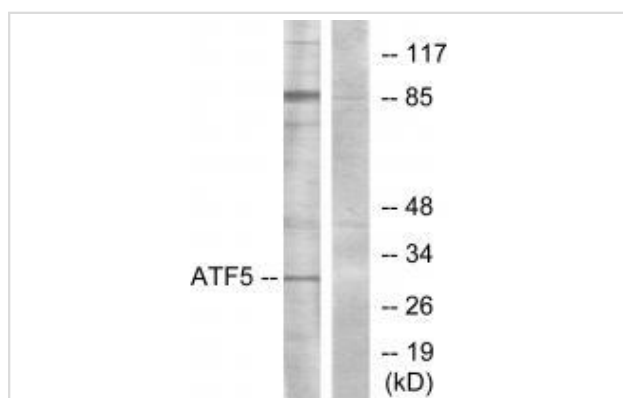
Description

Product Name	ATF5 Antibody
Host Species	Rabbit
Clonality	Polyclonal
Purification	The antibody was affinity-purified from rabbit antiserum by affinity-chromatography using epitope-specific immunogen.
Applications	WB
Species Reactivity	Hu Ms Rt
Specificity	The antibody detects endogenous levels of total ATF5 protein.
Immunogen Type	Peptide
Immunogen Description	Synthesized peptide derived from internal of human ATF5.
Target Name	ATF5
Other Names	Cyclic AMP-dependent transcription factor ATF-5; Activating transcription factor 5; Transcription factor ATFx; ATF5; ATFx
Accession No.	Swiss-Prot: Q9Y2D1NCBI Gene ID: 22809
Uniprot	Q9Y2D1
GeneID	22809;
SDS-PAGE MW	31kd
Concentration	1.0mg/ml
Formulation	Rabbit IgG in phosphate buffered saline (without Mg ²⁺ and Ca ²⁺), pH 7.4, 150mM NaCl, 0.02% sodium azide and 50% glycerol.
Storage	Store at -20°C

Application Details

Western blotting: 1:500~1:3000

Images



Western blot analysis of extracts from Jurkat cells, using ATF5 antibody #34127.

Background

Transcriptional activator which binds the cAMP response element (CRE) (consensus: 5'-GTGACGT[AC][AG]-3'), a sequence present in many viral and cellular promoters and blocks the differentiation of neuroprogenitor cells into neurons. Its transcriptional activity is enhanced by CCND3 and slightly inhibited by CDK4.

White J.H., Proc. Natl. Acad. Sci. U.S.A. 97:13967-13972(2000).

Yamada S., Oncogene 23:5901-5911(2004).

Liu W., Biochem. Biophys. Res. Commun. 321:954-960(2004).

Note: This product is for in vitro research use only