

STA13 Antibody

Catalog No: #34132

Package Size: #34132-1 50ul #34132-2 100ul

Orders: order@signalwayantibody.com

Support: tech@signalwayantibody.com

Description

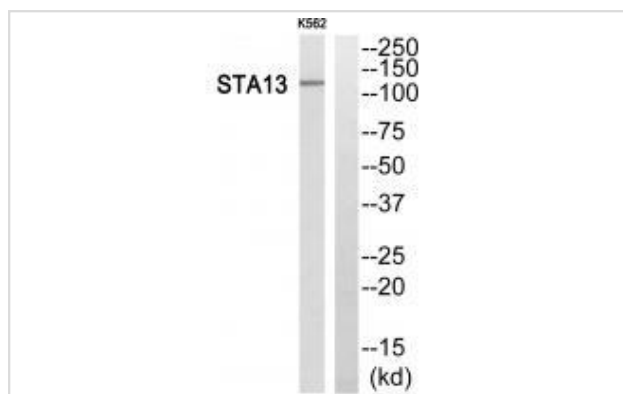
Product Name	STA13 Antibody
Host Species	Rabbit
Clonality	Polyclonal
Purification	The antibody was affinity-purified from rabbit antiserum by affinity-chromatography using epitope-specific immunogen.
Applications	WB IF
Species Reactivity	Hu
Specificity	The antibody detects endogenous levels of total STA13 protein.
Immunogen Type	Peptide
Immunogen Description	Synthesized peptide derived from N-terminal of human STA13.
Target Name	STA13
Other Names	STA13; START domain containing 13; START domain- containing protein 13; StAR-related lipid transfer protein 13; deleted in liver cancer 2
Accession No.	Swiss-Prot: Q9Y3M8NCBI Gene ID: 90627
Uniprot	Q9Y3M8
GeneID	90627;
SDS-PAGE MW	125kd
Concentration	1.0mg/ml
Formulation	Rabbit IgG in phosphate buffered saline (without Mg ²⁺ and Ca ²⁺), pH 7.4, 150mM NaCl, 0.02% sodium azide and 50% glycerol.
Storage	Store at -20°C

Application Details

Western blotting: 1:500~1:3000

Immunofluorescence: 1:100~1:500

Images



Western blot analysis of extracts from K562 cells, using STA13 antibody #34132.

Immunofluorescence analysis of A549 cells, using STA13 antibody #34132.



Background

GTPase-activating protein for RhoA, and perhaps for Cdc42. May be involved in regulation of cytoskeletal reorganization, cell proliferation and cell motility. Acts a tumor suppressor in hepatocellular carcinoma cells.

Ching Y.-P., J. Biol. Chem. 278:10824-10830(2003).

Nagaraja G.M., Biochem. Biophys. Res. Commun. 313:654-665(2004).

Leung T.H.-Y., Proc. Natl. Acad. Sci. U.S.A. 102:15207-15212(2005).

Note: This product is for in vitro research use only