

EID1 Antibody

Catalog No: #34140

Package Size: #34140-1 50ul #34140-2 100ul

Orders: order@signalwayantibody.comSupport: tech@signalwayantibody.com

Description

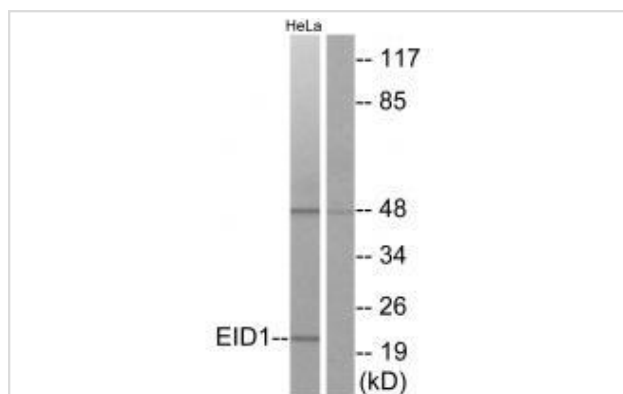
Product Name	EID1 Antibody
Host Species	Rabbit
Clonality	Polyclonal
Purification	The antibody was affinity-purified from rabbit antiserum by affinity-chromatography using epitope-specific immunogen.
Applications	WB IF
Species Reactivity	Hu
Specificity	The antibody detects endogenous levels of total EID1 protein.
Immunogen Type	Peptide
Immunogen Description	Synthesized peptide derived from internal of human EID1.
Target Name	EID1
Other Names	EP300-interacting inhibitor of differentiation 1; EID-1; E1A-like inhibitor of differentiation 1; CREBBP/EP300 inhibitory protein 1; 21 kDa pRb-associated protein
Accession No.	Swiss-Prot: Q9Y6B2NCBI Gene ID: 23741
Uniprot	Q9Y6B2
GeneID	23741;
SDS-PAGE MW	21kd
Concentration	1.0mg/ml
Formulation	Rabbit IgG in phosphate buffered saline (without Mg ²⁺ and Ca ²⁺), pH 7.4, 150mM NaCl, 0.02% sodium azide and 50% glycerol.
Storage	Store at -20°C

Application Details

Western blotting: 1:500~1:3000

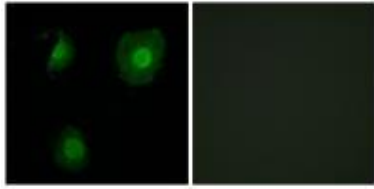
Immunofluorescence: 1:100~1:500

Images



Western blot analysis of extracts from HeLa cells, using EID1 antibody #34140.

Immunofluorescence analysis of A549 cells, using EID1 antibody #34140.



Background

Interacts with RB1 and EP300 and acts as a repressor of MYOD1 transactivation. Inhibits EP300 and CBP histone acetyltransferase activity. May be involved in coupling cell cycle exit to the transcriptional activation of genes required for cellular differentiation. May act as a candidate coinhibitory factor for NR0B2 that can be directly linked to transcription inhibitory mechanisms. UniProtKB Q9DCR4

MacLellan W.R., Mol. Cell. Biol. 20:8903-8915(2000).

Wen H., Ao S.; Gene 263:85-92(2001).

Ota T., Nat. Genet. 36:40-45(2004).

Note: This product is for in vitro research use only