

14-3-3  $\theta$  Antibody

Catalog No: #34148

Package Size: #34148-1 50ul #34148-2 100ul

Orders: [order@signalwayantibody.com](mailto:order@signalwayantibody.com)Support: [tech@signalwayantibody.com](mailto:tech@signalwayantibody.com)

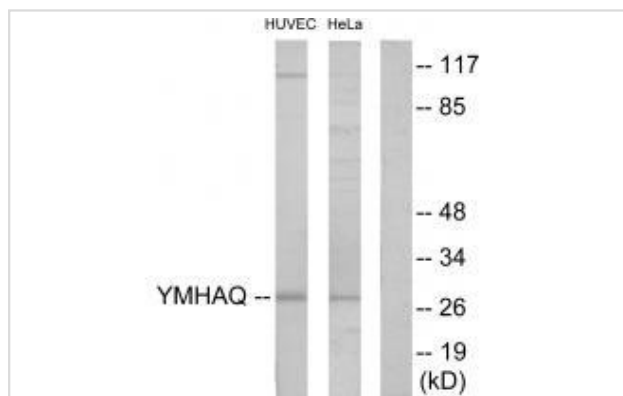
## Description

Product Name	14-3-3 $\theta$ Antibody
Host Species	Rabbit
Clonality	Polyclonal
Purification	The antibody was affinity-purified from rabbit antiserum by affinity-chromatography using epitope-specific immunogen.
Applications	WB
Species Reactivity	Hu Ms Rt
Specificity	The antibody detects endogenous levels of total 14-3-3 $\theta$ protein.
Immunogen Type	Peptide
Immunogen Description	Synthesized peptide derived from internal of human 14-3-3 $\theta$ .
Target Name	14-3-3 $\theta$
Other Names	14-3-3 protein T-cell; 14-3-3 protein tau; 1433T; 143T; HS1 protein
Accession No.	Swiss-Prot: P27348NCBI Gene ID: 10971
Uniprot	P27348
GeneID	10971;
SDS-PAGE MW	28kd
Concentration	1.0mg/ml
Formulation	Rabbit IgG in phosphate buffered saline (without Mg <sup>2+</sup> and Ca <sup>2+</sup> ), pH 7.4, 150mM NaCl, 0.02% sodium azide and 50% glycerol.
Storage	Store at -20°C

## Application Details

Western blotting: 1:500~1:3000

## Images



Western blot analysis of extracts from HUVEC cells and HeLa cells, using 14-3-3  $\theta$  antibody #34148.

## Background

---

Adapter protein implicated in the regulation of a large spectrum of both general and specialized signaling pathways. Binds to a large number of partners, usually by recognition of a phosphoserine or phosphothreonine motif. Binding generally results in the modulation of the activity of the binding partner. Negatively regulates the kinase activity of PDPK1.

Nielsen P.J., Biochim. Biophys. Acta 1088:425-428(1991).

Leffers H., J. Mol. Biol. 231:982-998(1993).

Gevaert K., Nat. Biotechnol. 21:566-569(2003).

---

Note: This product is for in vitro research use only