

## 5-HT-1F Antibody

Catalog No: #34150

Package Size: #34150-1 50ul #34150-2 100ul

Orders: [order@signalwayantibody.com](mailto:order@signalwayantibody.com)Support: [tech@signalwayantibody.com](mailto:tech@signalwayantibody.com)

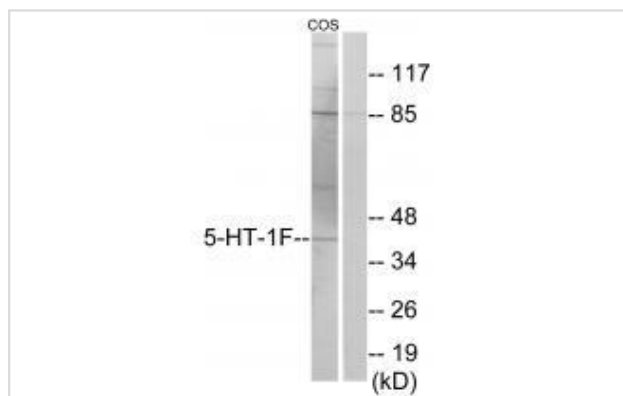
## Description

Product Name	5-HT-1F Antibody
Host Species	Rabbit
Clonality	Polyclonal
Purification	The antibody was affinity-purified from rabbit antiserum by affinity-chromatography using epitope-specific immunogen.
Applications	WB
Species Reactivity	Hu
Specificity	The antibody detects endogenous levels of total 5-HT-1F protein.
Immunogen Type	Peptide
Immunogen Description	Synthesized peptide derived from internal of human 5-HT-1F.
Target Name	5-HT-1F
Other Names	5-hydroxytryptamine receptor 1F; 5-HT-1F; Serotonin receptor 1F; HTR1F; HTR1EL
Accession No.	Swiss-Prot: P30939NCBI Gene ID: 3355
Uniprot	P30939
GeneID	3355;
SDS-PAGE MW	38kd
Concentration	1.0mg/ml
Formulation	Rabbit IgG in phosphate buffered saline (without Mg <sup>2+</sup> and Ca <sup>2+</sup> ), pH 7.4, 150mM NaCl, 0.02% sodium azide and 50% glycerol.
Storage	Store at -20°C

## Application Details

Western blotting: 1:500~1:3000

## Images



Western blot analysis of extracts from COS-7 cells, using 5-HT-1F antibody #34150.

## Background

---

G-protein coupled receptor for 5-hydroxytryptamine (serotonin). Also functions as a receptor for various alkaloids and psychoactive substances. Ligand binding causes a conformation change that triggers signaling via guanine nucleotide-binding proteins (G proteins) and modulates the activity of down-stream effectors, such as adenylate cyclase. Signaling inhibits adenylate cyclase activity.

Lovenberg T.W., Proc. Natl. Acad. Sci. U.S.A. 90:2184-2188(1993).

Adham N., Proc. Natl. Acad. Sci. U.S.A. 90:408-412(1993).

The MGC Project Team, Genome Res. 14:2121-2127(2004).

---

Note: This product is for in vitro research use only