

## 5-HT-6 Antibody

Catalog No: #34155

Package Size: #34155-1 50ul #34155-2 100ul

Orders: [order@signalwayantibody.com](mailto:order@signalwayantibody.com)Support: [tech@signalwayantibody.com](mailto:tech@signalwayantibody.com)

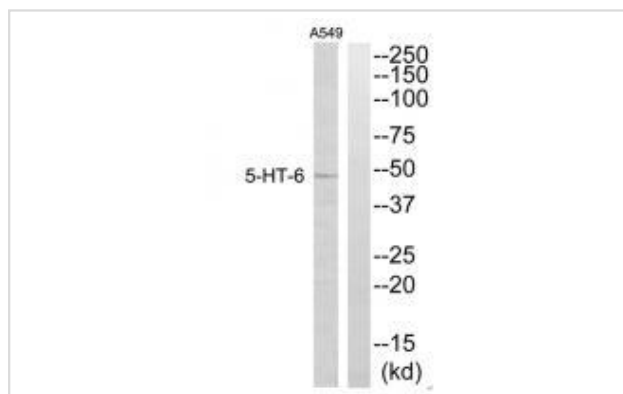
## Description

Product Name	5-HT-6 Antibody
Host Species	Rabbit
Clonality	Polyclonal
Purification	The antibody was affinity-purified from rabbit antiserum by affinity-chromatography using epitope-specific immunogen.
Applications	WB
Species Reactivity	Hu
Specificity	The antibody detects endogenous levels of total 5-HT-6 protein.
Immunogen Type	Peptide
Immunogen Description	Synthesized peptide derived from internal of human 5-HT-6.
Target Name	5-HT-6
Other Names	5-HT6; 5HT6R; HTR6;
Accession No.	Swiss-Prot: P50406NCBI Gene ID: 3362
Uniprot	P50406
GeneID	3362;
SDS-PAGE MW	47kd
Concentration	1.0mg/ml
Formulation	Rabbit IgG in phosphate buffered saline (without Mg <sup>2+</sup> and Ca <sup>2+</sup> ), pH 7.4, 150mM NaCl, 0.02% sodium azide and 50% glycerol.
Storage	Store at -20°C

## Application Details

Western blotting: 1:500~1:3000

## Images



Western blot analysis of extracts from A549 cells, using 5-HT-6 antibody #34155.

## Background

---

This is one of the several different receptors for 5-hydroxytryptamine (serotonin), a biogenic hormone that functions as a neurotransmitter, a hormone, and a mitogen. The activity of this receptor is mediated by G proteins that stimulate adenylate cyclase. It has a high affinity for tricyclic psychotropic drugs.

Kohen R., J. Neurochem. 66:47-56(1996).

Kopatz S.A., Submitted (OCT-2003) to the EMBL/GenBank/DDBJ databases.

Gregory S.G., Nature 441:315-321(2006).

---

Note: This product is for in vitro research use only