

ESA(FLOT2) Antibody

Catalog No: #21603



Package Size: #21603-1 50ul #21603-2 100ul

Orders: [order@signalwayantibody.com](mailto:order@signalwayantibody.com)  
Support: [tech@signalwayantibody.com](mailto:tech@signalwayantibody.com)

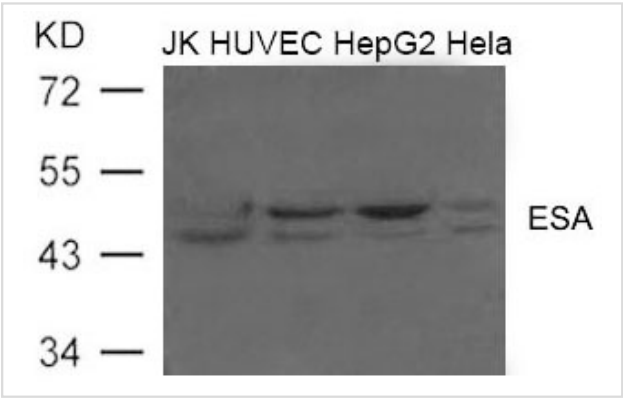
Description

Product Name	ESA(FLOT2) Antibody
Host Species	Rabbit
Clonality	Polyclonal
Purification	Antibodies were produced by immunizing rabbits with synthetic peptide and KLH conjugates. Antibodies were purified by affinity-chromatography using epitope-specific peptide.
Applications	WB
Species Reactivity	Hu
Specificity	The antibody detects endogenous level of total ESA (FLOT2) protein.
Immunogen Type	Peptide-KLH
Immunogen Description	Peptide sequence around aa.420~424(I-K-K-A-T) derived from Human ESA (FLOT2).
Target Name	ESA(FLOT2)
Other Names	ECS1; ESA1; ECS-1; M17S1;
Accession No.	Swiss-Prot: Q14254NCBI Protein: NP_004466.2
Uniprot	Q14254
GeneID	2319;
Concentration	1.0mg/ml
Formulation	Supplied at 1.0mg/mL in phosphate buffered saline (without Mg2+ and Ca2+), pH 7.4, 150mM NaCl, 0.02% sodium azide and 50% glycerol.
Storage	Store at -20°C for long term preservation (recommended). Store at 4°C for short term use.

Application Details

Predicted MW: 47kd  
Western blotting: 1:500~1:1000

Images



Western blot analysis of extract from JK, HUVEC, HepG2 and Hela cells using ESA(FLOT2) Antibody #21603

## Background

---

May act as a scaffolding protein within caveolar membranes, functionally participating in formation of caveolae or caveolae-like vesicles. May be involved in epidermal cell adhesion and epidermal structure and function.

Gorbea C., Pratt G., Ustrell V., Bell R., Sahasrabudhe S., Hughes R.E., Rechsteiner M. J. Biol. Chem. 285:31616-31633(2010)

---

Note: This product is for in vitro research use only