

CD2 Tail-binding Antibody

Catalog No: #34187

Package Size: #34187-1 50ul #34187-2 100ul

Orders: order@signalwayantibody.comSupport: tech@signalwayantibody.com

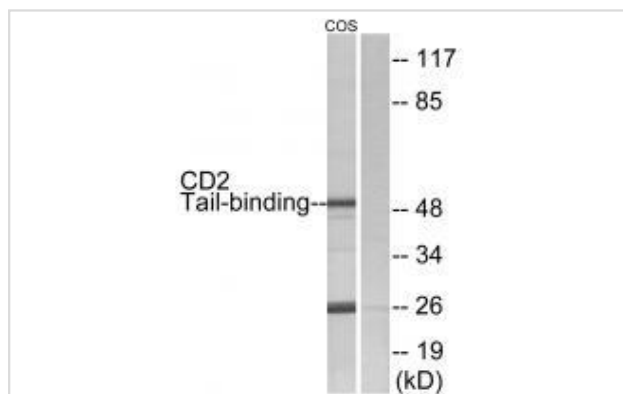
Description

Product Name	CD2 Tail-binding Antibody
Host Species	Rabbit
Clonality	Polyclonal
Purification	The antibody was affinity-purified from rabbit antiserum by affinity-chromatography using epitope-specific immunogen.
Applications	WB
Species Reactivity	Hu
Specificity	The antibody detects endogenous levels of total CD2 Tail-binding protein.
Immunogen Type	Peptide
Immunogen Description	Synthesized peptide derived from internal of human CD2 Tail-binding.
Target Name	CD2 Tail-binding
Other Names	CD2 antigen cytoplasmic tail-binding 2; CD2 cytoplasmic domain-binding; CD2 tail-binding; CD2B2; LIN1
Accession No.	Swiss-Prot: O95400NCBI Gene ID: 10421
Uniprot	O95400
GeneID	10421;
SDS-PAGE MW	50kd
Concentration	1.0mg/ml
Formulation	Rabbit IgG in phosphate buffered saline (without Mg ²⁺ and Ca ²⁺), pH 7.4, 150mM NaCl, 0.02% sodium azide and 50% glycerol.
Storage	Store at -20°C

Application Details

Western blotting: 1:500~1:3000

Images



Western blot analysis of extracts from COS-7 cells, using CD2 Tail-binding antibody #34187.

Background

Involved in pre-mRNA splicing as component of the U5 snRNP complex that is involved in spliceosome assembly.

Nishizawa K., Proc. Natl. Acad. Sci. U.S.A. 95:14897-14902(1998).

The MGC Project Team; Genome Res. 14:2121-2127(2004).

Hirosawa M., DNA Res. 6:329-336(1999).

Note: This product is for in vitro research use only