

CDC20 Antibody

Catalog No: #34189

Package Size: #34189-1 50ul #34189-2 100ul

Orders: order@signalwayantibody.comSupport: tech@signalwayantibody.com

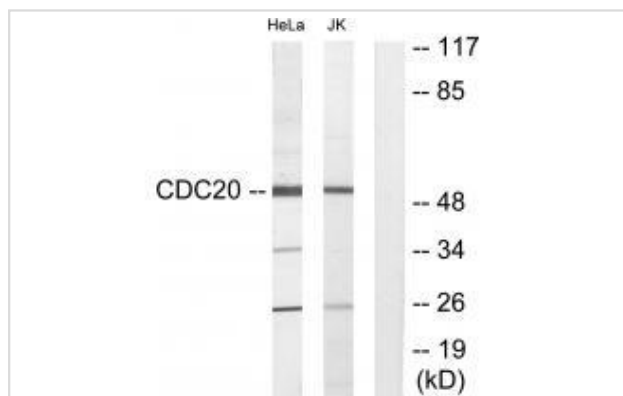
Description

Product Name	CDC20 Antibody
Host Species	Rabbit
Clonality	Polyclonal
Purification	The antibody was affinity-purified from rabbit antiserum by affinity-chromatography using epitope-specific immunogen.
Applications	WB
Species Reactivity	Hu Ms Rt
Specificity	The antibody detects endogenous levels of total CDC20 protein.
Immunogen Type	Peptide
Immunogen Description	Synthesized peptide derived from internal of human CDC20.
Target Name	CDC20
Other Names	CC20; Cell division cycle protein 20 homolog; p55CDC;
Accession No.	Swiss-Prot: Q12834NCBI Gene ID: 991
Uniprot	Q12834
GeneID	991;
SDS-PAGE MW	50kd
Concentration	1.0mg/ml
Formulation	Rabbit IgG in phosphate buffered saline (without Mg ²⁺ and Ca ²⁺), pH 7.4, 150mM NaCl, 0.02% sodium azide and 50% glycerol.
Storage	Store at -20°C

Application Details

Western blotting: 1:500~1:3000

Images



Western blot analysis of extracts from HeLa cells and Jurkat cells, using CDC20 antibody #34189.

Background

Required for full ubiquitin ligase activity of the anaphase promoting complex/cyclosome (APC/C) and may confer substrate specificity upon the complex. Is regulated by MAD2L1: in metaphase the MAD2L1-CDC20-APC/C ternary complex is inactive and in anaphase the CDC20-APC/C binary complex is active in degrading substrates. The CDC20-APC/C complex positively regulates the formation of synaptic vesicle clustering at active zone to the presynaptic membrane in postmitotic neurons. CDC20-APC/C-induced degradation of NEUROD2 induces presynaptic differentiation.

Weinstein J., Mol. Cell. Biol. 14:3350-3363(1994).

Kramer E.R., Curr. Biol. 8:1207-1210(1998).

Gregory S.G., Nature 441:315-321(2006).

Note: This product is for in vitro research use only