

Collagen I  $\alpha$ 2 Antibody

Catalog No: #34203

Package Size: #34203-1 50ul #34203-2 100ul

Orders: order@signalwayantibody.com

Support: tech@signalwayantibody.com

## Description

Product Name	Collagen I $\alpha$ 2 Antibody
Host Species	Rabbit
Clonality	Polyclonal
Purification	The antibody was affinity-purified from rabbit antiserum by affinity-chromatography using epitope-specific immunogen.
Applications	WB IHC IF
Species Reactivity	Hu
Specificity	The antibody detects endogenous levels of total Collagen I $\alpha$ 2 protein.
Immunogen Type	Peptide
Immunogen Description	Synthesized peptide derived from internal of human Collagen I $\alpha$ 2.
Target Name	Collagen I $\alpha$ 2
Other Names	Collagen alpha-2(I) chain [Precursor]; Alpha-2 type I collagen; CO1A2;
Accession No.	Swiss-Prot: P08123NCBI Gene ID: 1278
Uniprot	P08123
GeneID	1278;
SDS-PAGE MW	125kd
Concentration	1.0mg/ml
Formulation	Rabbit IgG in phosphate buffered saline (without Mg <sup>2+</sup> and Ca <sup>2+</sup> ), pH 7.4, 150mM NaCl, 0.02% sodium azide and 50% glycerol.
Storage	Store at -20°C

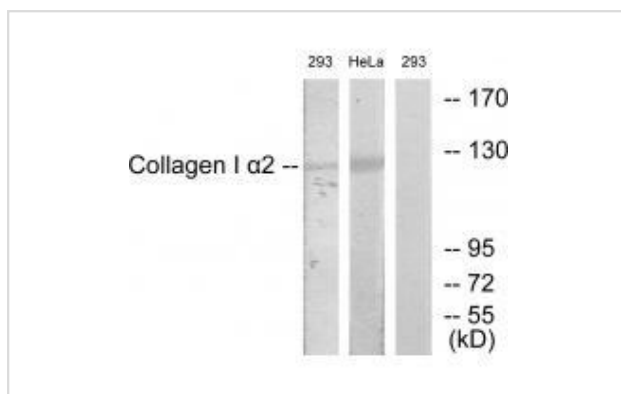
## Application Details

Western blotting: 1:500~1:3000

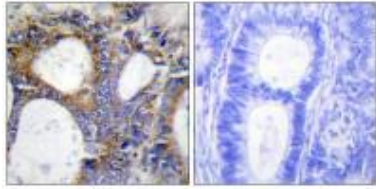
Immunohistochemistry: 1:50~1:100

Immunofluorescence: 1:100~1:500

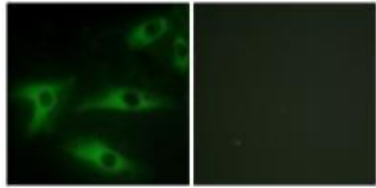
## Images



Western blot analysis of extracts from 293 cells and HeLa cells, using Collagen I  $\alpha$ 2 antibody #34203.



Immunohistochemistry analysis of paraffin-embedded human colon carcinoma tissue using Collagen I  $\alpha$ 2 antibody #34203.



Immunofluorescence analysis of HeLa cells, using Collagen I  $\alpha$ 2 antibody #34203.

## Background

Type I collagen is a member of group I collagen (fibrillar forming collagen).

Dalgleish R., *Nucleic Acids Res.* 25:181-187(1997).

Korkko J.M., *Am. J. Hum. Genet.* 62:98-110(1998).

Akai J., *Connect. Tissue Res.* 30:1-6(1998).

Note: This product is for in vitro research use only