

Cofilin Antibody

Catalog No: #34215

Package Size: #34215-1 50ul #34215-2 100ul

Orders: order@signalwayantibody.comSupport: tech@signalwayantibody.com

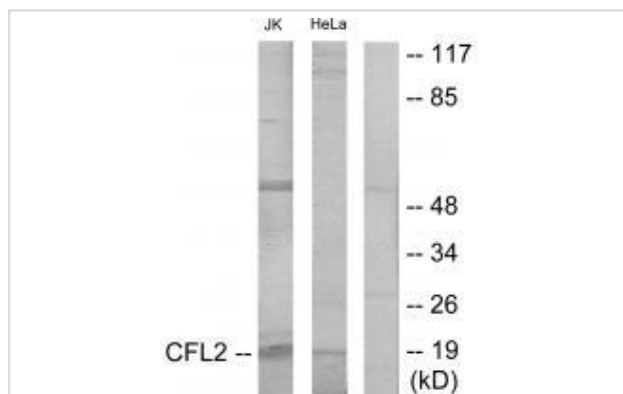
Description

Product Name	Cofilin Antibody
Host Species	Rabbit
Clonality	Polyclonal
Purification	The antibody was affinity-purified from rabbit antiserum by affinity-chromatography using epitope-specific immunogen.
Applications	WB
Species Reactivity	Hu Ms Rt
Specificity	The antibody detects endogenous levels of total Cofilin protein.
Immunogen Type	Peptide
Immunogen Description	Synthesized peptide derived from internal of human Cofilin.
Target Name	Cofilin
Other Names	CFL2; COF2; Cofilin 2; Cofilin; muscle isoform
Accession No.	Swiss-Prot: P23528/Q9Y281NCBI Gene ID: 1073/1072
Uniprot	P23528
GeneID	1072;
SDS-PAGE MW	19kd
Concentration	1.0mg/ml
Formulation	Rabbit IgG in phosphate buffered saline (without Mg ²⁺ and Ca ²⁺), pH 7.4, 150mM NaCl, 0.02% sodium azide and 50% glycerol.
Storage	Store at -20°C

Application Details

Western blotting: 1:500~1:3000

Images



Western blot analysis of extracts from Jurkat cells and HeLa cells, using Cofilin antibody #34215.

Background

Binds to F-actin and exhibits pH-sensitive F-actin depolymerizing activity. Regulates actin cytoskeleton dynamics. Important for normal progress through mitosis and normal cytokinesis. Plays a role in the regulation of cell morphology and cytoskeletal organization. Required for the up-regulation of atypical chemokine receptor ACKR2 from endosomal compartment to cell membrane, increasing its efficiency in chemokine uptake and degradation.

Thirion C., Eur. J. Biochem. 268:3473-3482(2001).

Zhang Y., Mol. Cell. Proteomics 4:1240-1250(2005).

Olsen J.V., Cell 127:635-648(2006).

Note: This product is for in vitro research use only