

Cytochrome P450 1A1/2 Antibody

Catalog No: #34227

Package Size: #34227-1 50ul #34227-2 100ul

Orders: order@signalwayantibody.comSupport: tech@signalwayantibody.com

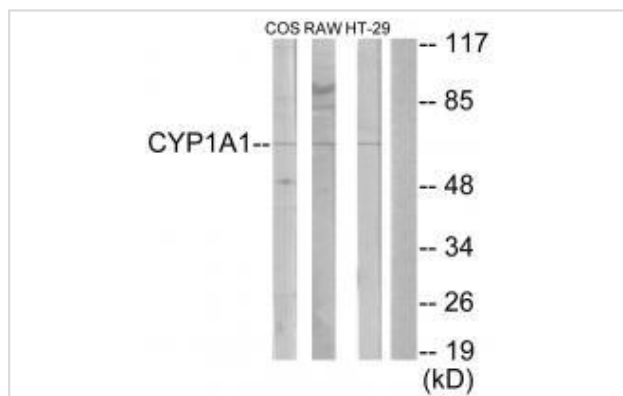
Description

Product Name	Cytochrome P450 1A1/2 Antibody
Host Species	Rabbit
Clonality	Polyclonal
Purification	The antibody was affinity-purified from rabbit antiserum by affinity-chromatography using epitope-specific immunogen.
Applications	WB
Species Reactivity	Hu Ms Rt
Specificity	The antibody detects endogenous levels of total Cytochrome P450 1A1/2 protein.
Immunogen Type	Peptide
Immunogen Description	Synthesized peptide derived from internal of human Cytochrome P450 1A1/2.
Target Name	Cytochrome P450 1A1/2
Other Names	AHH; AHRR; CP11; CYP1; CYPIA1
Accession No.	Swiss-Prot: P04798/P05177NCBI Gene ID: 1543/1544
Uniprot	P04798
GeneID	1543;
SDS-PAGE MW	58kd
Concentration	1.0mg/ml
Formulation	Rabbit IgG in phosphate buffered saline (without Mg ²⁺ and Ca ²⁺), pH 7.4, 150mM NaCl, 0.02% sodium azide and 50% glycerol.
Storage	Store at -20°C

Application Details

Western blotting: 1:500~1:3000

Images



Western blot analysis of extracts from COS-7 cells, RAW264.7 cells and HT-29 cells, using Cytochrome P450 1A1/2 antibody #34227.

Background

Cytochromes P450 are a group of heme-thiolate monooxygenases. In liver microsomes, this enzyme is involved in an NADPH-dependent electron transport pathway. It oxidizes a variety of structurally unrelated compounds, including steroids, fatty acids, and xenobiotics.

Jaiswal A.K., Nucleic Acids Res. 13:4503-4520(1985).

The MGC Project Team, Genome Res. 14:2121-2127(2004).

Olsen J.V., II 127:635-648(2006).

Note: This product is for in vitro research use only