

Cytochrome P450 26A1 Antibody

Catalog No: #34230



Package Size: #34230-1 50ul #34230-2 100ul

Orders: order@signalwayantibody.com
Support: tech@signalwayantibody.com

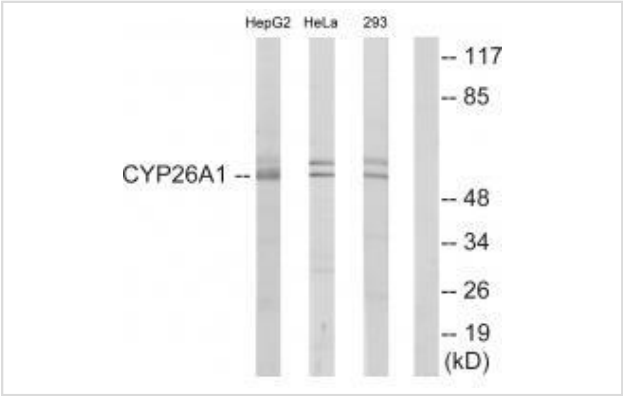
Description

Product Name	Cytochrome P450 26A1 Antibody
Host Species	Rabbit
Clonality	Polyclonal
Purification	The antibody was affinity-purified from rabbit antiserum by affinity-chromatography using epitope-specific immunogen.
Applications	WB
Species Reactivity	Hu Ms Rt
Specificity	The antibody detects endogenous levels of total Cytochrome P450 26A1 protein.
Immunogen Type	Peptide
Immunogen Description	Synthesized peptide derived from internal of human Cytochrome P450 26A1.
Target Name	Cytochrome P450 26A1
Other Names	Cytochrome P450 26A1; EC 1.14.-.-; Retinoic acid-metabolizing cytochrome; P450 retinoic acid-inactivating 1; P450RAI
Accession No.	Swiss-Prot: O43174NCBI Gene ID: 1592
Uniprot	O43174
GeneID	1592;
SDS-PAGE MW	56kd
Concentration	1.0mg/ml
Formulation	Rabbit IgG in phosphate buffered saline (without Mg2+ and Ca2+), pH 7.4, 150mM NaCl, 0.02% sodium azide and 50% glycerol.
Storage	Store at -20°C

Application Details

Western blotting: 1:500~1:3000

Images



Western blot analysis of extracts from HepG2 cells, HeLa cells and 293 cells, using Cytochrome P450 26A1 antibody #34230.

Background

Plays a key role in retinoic acid metabolism. Acts on retinoids, including all-trans-retinoic acid (RA) and its stereoisomer 9-cis-RA. Capable of both 4-hydroxylation and 18-hydroxylation. Responsible for generation of several hydroxylated forms of RA, including 4-OH-RA, 4-oxo-RA and 18-OH-RA.

White J.A., J. Biol. Chem. 272:18538-18541(1997).

Sonneveld E., Cell Growth Differ. 9:629-637(1998).

ova-Griffin M.E., Biochem. Biophys. Res. Commun. 252:487-491(1998).

Note: This product is for in vitro research use only