

Cytochrome P450 2A6 Antibody

Catalog No: #34232

Package Size: #34232-1 50ul #34232-2 100ul

Orders: order@signalwayantibody.comSupport: tech@signalwayantibody.com

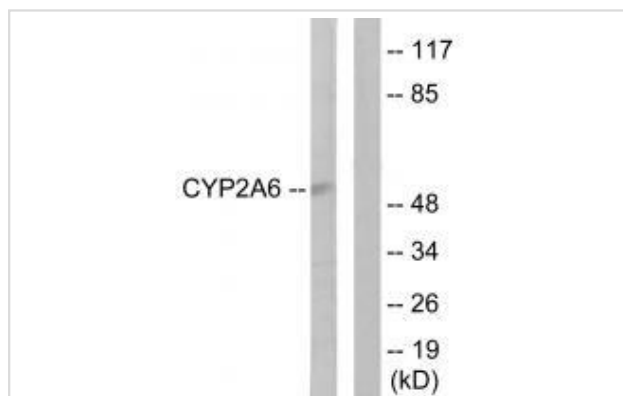
Description

Product Name	Cytochrome P450 2A6 Antibody
Host Species	Rabbit
Clonality	Polyclonal
Purification	The antibody was affinity-purified from rabbit antiserum by affinity-chromatography using epitope-specific immunogen.
Applications	WB
Species Reactivity	Hu
Specificity	The antibody detects endogenous levels of total Cytochrome P450 2A6 protein.
Immunogen Type	Peptide
Immunogen Description	Synthesized peptide derived from N-terminal of human Cytochrome P450 2A6.
Target Name	Cytochrome P450 2A6
Other Names	Cytochrome P450 2A6; EC 1.14.14.1; CYP1A6; Coumarin 7-hydroxylase; P450 IIA3
Accession No.	Swiss-Prot: P11509NCBI Gene ID: 1548
Uniprot	P11509
GeneID	1548;
SDS-PAGE MW	56kd
Concentration	1.0mg/ml
Formulation	Rabbit IgG in phosphate buffered saline (without Mg ²⁺ and Ca ²⁺), pH 7.4, 150mM NaCl, 0.02% sodium azide and 50% glycerol.
Storage	Store at -20°C

Application Details

Western blotting: 1:500~1:3000

Images



Western blot analysis of extracts from Jurkat cells, using Cytochrome P450 2A6 antibody #34232.

Background

Exhibits a high coumarin 7-hydroxylase activity. Can act in the hydroxylation of the anti-cancer drugs cyclophosphamide and ifosphamide. Competent in the metabolic activation of aflatoxin B1. Constitutes the major nicotine C-oxidase. Acts as a 1,4-cineole 2-exo-monooxygenase. Possesses low phenacetin O-deethylation activity.

Miles J.S., *Acids Res.* 17:2907-2917(1989).

Yamano S., *Biochemistry* 29:1322-1329(1990).

Saito S., *J. Hum. Genet.* 48:249-270(2003).

Note: This product is for in vitro research use only