

## FRS3 Antibody

Catalog No: #34249

Package Size: #34249-1 50ul #34249-2 100ul

Orders: [order@signalwayantibody.com](mailto:order@signalwayantibody.com)Support: [tech@signalwayantibody.com](mailto:tech@signalwayantibody.com)

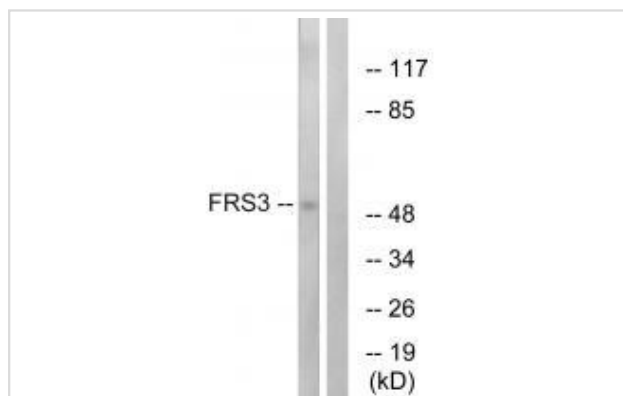
## Description

Product Name	FRS3 Antibody
Host Species	Rabbit
Clonality	Polyclonal
Purification	The antibody was affinity-purified from rabbit antiserum by affinity-chromatography using epitope-specific immunogen.
Applications	WB
Species Reactivity	Hu
Specificity	The antibody detects endogenous levels of total FRS3 protein.
Immunogen Type	Peptide
Immunogen Description	Synthesized peptide derived from internal of human FRS3.
Target Name	FRS3
Other Names	fibroblast growth factor receptor substrate 3; FRS2B; FRS2beta; MGC17167; SNT-2
Accession No.	Swiss-Prot: O43559NCBI Gene ID: 10817
Uniprot	O43559
GeneID	10817;
SDS-PAGE MW	54kd
Concentration	1.0mg/ml
Formulation	Rabbit IgG in phosphate buffered saline (without Mg <sup>2+</sup> and Ca <sup>2+</sup> ), pH 7.4, 150mM NaCl, 0.02% sodium azide and 50% glycerol.
Storage	Store at -20°C

## Application Details

Western blotting: 1:500~1:3000

## Images



Western blot analysis of extracts from COS-7 cells, using FRS3 antibody #34249.

## Background

---

Adapter protein that links FGF and NGF receptors to downstream signaling pathways. Involved in the activation of MAP kinases. Down-regulates ERK2 signaling by interfering with the phosphorylation and nuclear translocation of ERK2.

Xu H., J. Biol. Chem. 273:17987-17990(1998).

Mungall A.J., Nature 425:805-811(2003).

The MGC Project Team; Genome Res. 14:2121-2127(2004).

---

Note: This product is for in vitro research use only