

## Cyclosome 1 Antibody

Catalog No: #34257

Package Size: #34257-1 50ul #34257-2 100ul

Orders: [order@signalwayantibody.com](mailto:order@signalwayantibody.com)Support: [tech@signalwayantibody.com](mailto:tech@signalwayantibody.com)

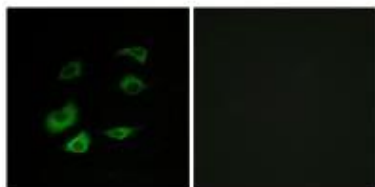
## Description

Product Name	Cyclosome 1 Antibody
Host Species	Rabbit
Clonality	Polyclonal
Purification	The antibody was affinity-purified from rabbit antiserum by affinity-chromatography using epitope-specific immunogen.
Applications	IF
Species Reactivity	Hu Ms
Specificity	The antibody detects endogenous levels of total Cyclosome 1 protein.
Immunogen Type	Peptide
Immunogen Description	Synthesized peptide derived from internal of human Cyclosome 1.
Target Name	Cyclosome 1
Other Names	ANAPC1; ANC1; Anaphase promoting complex subunit 1; Cyclosome subunit 1; Mitotic checkpoint regulator
Accession No.	Swiss-Prot: Q9H1A4NCBI Gene ID: 64682
Uniprot	Q9H1A4
GeneID	64682;
SDS-PAGE MW	22kd
Concentration	1.0mg/ml
Formulation	Rabbit IgG in phosphate buffered saline (without Mg <sup>2+</sup> and Ca <sup>2+</sup> ), pH 7.4, 150mM NaCl, 0.02% sodium azide and 50% glycerol.
Storage	Store at -20°C

## Application Details

Immunofluorescence: 1:100~1:500

## Images



Immunofluorescence analysis of HepG2 cells, using Cyclosome 1 antibody #34257.

## Background

Component of the anaphase promoting complex/cyclosome (APC/C), a cell cycle-regulated E3 ubiquitin ligase that controls progression through mitosis and the G1 phase of the cell cycle. The APC/C complex acts by mediating ubiquitination and subsequent degradation of target proteins: it mainly mediates the formation of 'Lys-11'-linked polyubiquitin chains and, to a lower extent, the formation of 'Lys-48'- and 'Lys-63'-linked polyubiquitin chains.

Joergensen P.M., Gene 262:51-59(2001).

Ota T., Nat. Genet. 36:40-45(2004).

Kraft C., EMBO J. 22:6598-6609(2003).

---

Note: This product is for in vitro research use only