

## GRAH Antibody

Catalog No: #34271

Package Size: #34271-1 50ul #34271-2 100ul

Orders: [order@signalwayantibody.com](mailto:order@signalwayantibody.com)Support: [tech@signalwayantibody.com](mailto:tech@signalwayantibody.com)

## Description

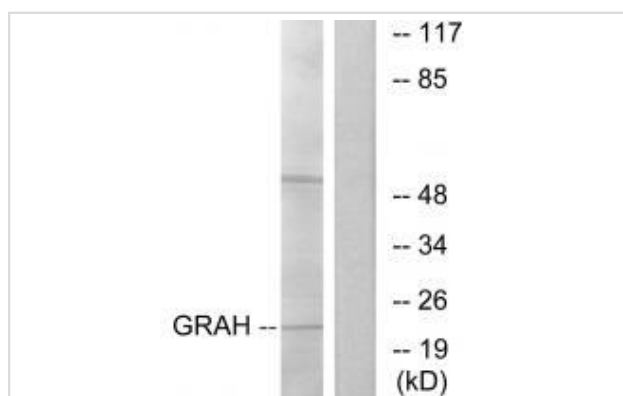
Product Name	GRAH Antibody
Host Species	Rabbit
Clonality	Polyclonal
Purification	The antibody was affinity-purified from rabbit antiserum by affinity-chromatography using epitope-specific immunogen.
Applications	WB IF
Species Reactivity	Hu
Specificity	The antibody detects endogenous levels of total GRAH protein.
Immunogen Type	Peptide
Immunogen Description	Synthesized peptide derived from internal of human GRAH.
Target Name	GRAH
Other Names	Granzyme H [Precursor]; EC 3.4.21.-; Cytotoxic T-lymphocyte proteinase; Cathepsin G-like 2; CTSL2
Accession No.	Swiss-Prot: P20718NCBI Gene ID: 2999
Uniprot	P20718
GeneID	2999;
SDS-PAGE MW	23kd
Concentration	1.0mg/ml
Formulation	Rabbit IgG in phosphate buffered saline (without Mg <sup>2+</sup> and Ca <sup>2+</sup> ), pH 7.4, 150mM NaCl, 0.02% sodium azide and 50% glycerol.
Storage	Store at -20°C

## Application Details

Western blotting: 1:500~1:3000

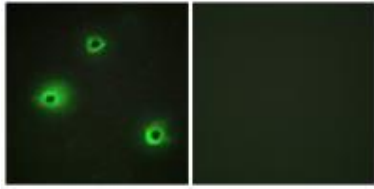
Immunofluorescence: 1:100~1:500

## Images



Western blot analysis of extracts from K562 cells, using GRAH antibody #34271.

Immunofluorescence analysis of A549 cells, using GRAH antibody #34271.



## Background

Cytotoxic chymotrypsin-like serine protease with preference for bulky and aromatic residues at the P1 position and acidic residues at the P3' and P4' sites. Probably necessary for target cell lysis in cell-mediated immune responses. Participates in the antiviral response via direct cleavage of several proteins essential for viral replication.

Meier M., Biochemistry 29:4042-4049(1990).

Haddad P., Int. Immunol. 3:57-66(1991).

Klein J.L., Tissue Antigens 35:220-228(1990).

Note: This product is for in vitro research use only