

LAMA1 Antibody

Catalog No: #34272

Package Size: #34272-1 50ul #34272-2 100ul

Orders: order@signalwayantibody.comSupport: tech@signalwayantibody.com

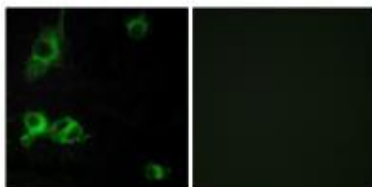
Description

Product Name	LAMA1 Antibody
Host Species	Rabbit
Clonality	Polyclonal
Purification	The antibody was affinity-purified from rabbit antiserum by affinity-chromatography using epitope-specific immunogen.
Applications	IF
Species Reactivity	Hu
Specificity	The antibody detects endogenous levels of total LAMA1 protein.
Immunogen Type	Peptide
Immunogen Description	Synthesized peptide derived from internal of human LAMA1.
Target Name	LAMA1
Other Names	LAMA; laminin A; laminin alpha-1;
Accession No.	Swiss-Prot: P25391NCBI Gene ID: 284217
Uniprot	P25391
GeneID	284217;
SDS-PAGE MW	337kd
Concentration	1.0mg/ml
Formulation	Rabbit IgG in phosphate buffered saline (without Mg ²⁺ and Ca ²⁺), pH 7.4, 150mM NaCl, 0.02% sodium azide and 50% glycerol.
Storage	Store at -20°C

Application Details

Immunofluorescence: 1:100~1:500

Images



Immunofluorescence analysis of COS-7 cells, using LAMA1 antibody #34272.

Background

Binding to cells via a high affinity receptor, laminin is thought to mediate the attachment, migration and organization of cells into tissues during embryonic development by interacting with other extracellular matrix components.

Haaparanta T., Matrix 11:151-160(1991).

Nissinen M., Biochem. J. 276:369-379(1991).

Olsen D., Lab. Invest. 60:772-782(1989).

Note: This product is for in vitro research use only