

ASH2L Antibody

Catalog No: #21497

Package Size: #21497-1 50ul #21497-2 100ul

Orders: order@signalwayantibody.com

Support: tech@signalwayantibody.com

Description

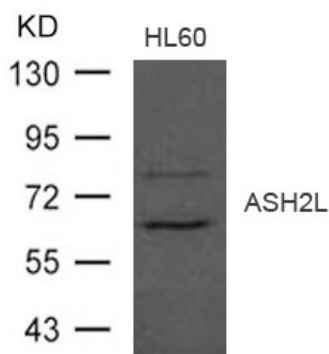
Product Name	ASH2L Antibody
Host Species	Rabbit
Clonality	Polyclonal
Purification	Antibodies were produced by immunizing rabbits with synthetic peptide and KLH conjugates. Antibodies were purified by affinity-chromatography using epitope-specific peptide.
Applications	WB
Species Reactivity	Hu
Specificity	The antibody detects endogenous level of total ASH2L protein.
Immunogen Type	Peptide-KLH
Immunogen Description	Peptide sequence around aa.620~624(G-R-R-S-P) derived from Human ASH2L.
Target Name	ASH2L
Other Names	ASH2; Bre2; ASH2L1; ASH2L2;
Accession No.	Swiss-Prot: Q9UBL3 NCBI Protein: NP_004665.2
Uniprot	Q9UBL3
GeneID	9070;
Concentration	1.0mg/ml
Formulation	Supplied at 1.0mg/mL in phosphate buffered saline (without Mg ²⁺ and Ca ²⁺), pH 7.4, 150mM NaCl, 0.02% sodium azide and 50% glycerol.
Storage	Store at -20°C for long term preservation (recommended). Store at 4°C for short term use.

Application Details

Predicted MW: 65 80kd

Western blotting: 1:500~1:1000

Images



Western blot analysis of extract from HL-60 cells using ASH2L Antibody #21497

Background

Component of the Set1/Ash2 histone methyltransferase (HMT) complex, a complex that specifically methylates 'Lys-4' of histone H3, but not if the neighboring 'Lys-9' residue is already methylated. As part of the MLL1/MLL complex it is involved in methylation and dimethylation at 'Lys-4' of histone H3. May function as a transcriptional regulator. May play a role in hematopoiesis.

Wysocka J., Myers M.P., Laherty C.D., Eisenman R.N., Herr W. *Genes Dev.* 17:896-911(2003)

Patel A., Dharmarajan V., Vought V.E., Cosgrove M.S.J. *Biol. Chem.* 284:24242-24256(2009)

Note: This product is for in vitro research use only