

LAMB2 Antibody

Catalog No: #34277

Package Size: #34277-1 50ul #34277-2 100ul

Orders: order@signalwayantibody.comSupport: tech@signalwayantibody.com

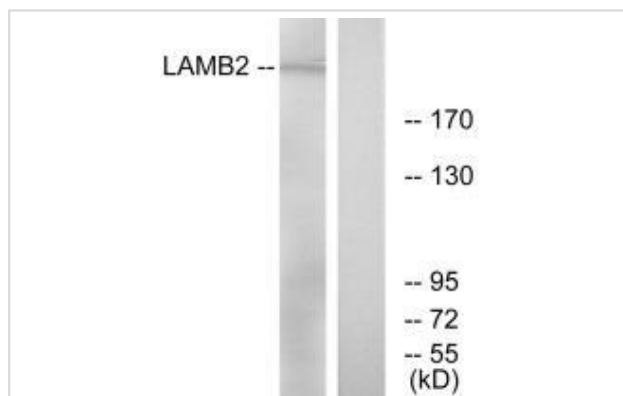
Description

Product Name	LAMB2 Antibody
Host Species	Rabbit
Clonality	Polyclonal
Purification	The antibody was affinity-purified from rabbit antiserum by affinity-chromatography using epitope-specific immunogen.
Applications	WB
Species Reactivity	Hu Ms Rt
Specificity	The antibody detects endogenous levels of total LAMB2 protein.
Immunogen Type	Peptide
Immunogen Description	Synthesized peptide derived from internal of human LAMB2.
Target Name	LAMB2
Other Names	laminin B1s; laminin beta-2; laminin S; LAMS; S-laminin
Accession No.	Swiss-Prot: P55268NCBI Gene ID: 3913
Uniprot	P55268
GeneID	3913;
SDS-PAGE MW	210kd
Concentration	1.0mg/ml
Formulation	Rabbit IgG in phosphate buffered saline (without Mg ²⁺ and Ca ²⁺), pH 7.4, 150mM NaCl, 0.02% sodium azide and 50% glycerol.
Storage	Store at -20°C

Application Details

Western blotting: 1:500~1:3000

Images



Western blot analysis of extracts from RAW264.7 cells, using LAMB2 antibody #34277.

Background

Binding to cells via a high affinity receptor, laminin is thought to mediate the attachment, migration and organization of cells into tissues during embryonic development by interacting with other extracellular matrix components.

Wewer U.M., Genomics 24:243-252(1994).

Iivanainen A., Matrix Biol. 14:489-497(1995).

Zenker M., Hum. Mol. Genet. 13:2625-2632(2004).

Note: This product is for in vitro research use only