

LAMC3 Antibody

Catalog No: #34280

Package Size: #34280-1 50ul #34280-2 100ul

Orders: order@signalwayantibody.com

Support: tech@signalwayantibody.com

Description

Product Name	LAMC3 Antibody
Host Species	Rabbit
Clonality	Polyclonal
Purification	The antibody was affinity-purified from rabbit antiserum by affinity-chromatography using epitope-specific immunogen.
Applications	WB IHC IF
Species Reactivity	Hu Ms
Specificity	The antibody detects endogenous levels of total LAMC3 protein.
Immunogen Type	Peptide
Immunogen Description	Synthesized peptide derived from internal of human LAMC3.
Target Name	LAMC3
Other Names	Laminin subunit gamma-3; Laminin 12 gamma 3 subunit;
Accession No.	Swiss-Prot: Q9Y6N6NCBI Gene ID: 10319
Uniprot	Q9Y6N6
GeneID	10319;
SDS-PAGE MW	172kd
Concentration	1.0mg/ml
Formulation	Rabbit IgG in phosphate buffered saline (without Mg ²⁺ and Ca ²⁺), pH 7.4, 150mM NaCl, 0.02% sodium azide and 50% glycerol.
Storage	Store at -20°C

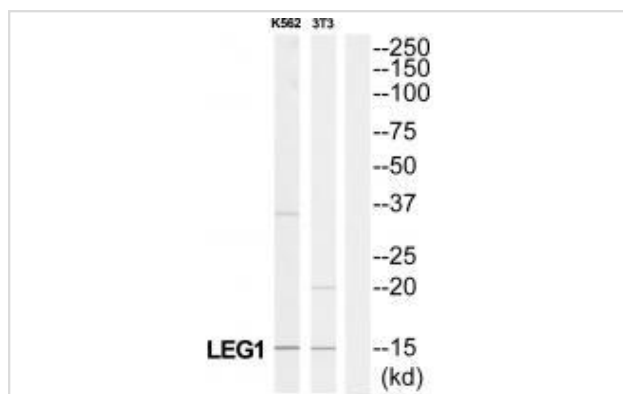
Application Details

Western blotting: 1:500~1:3000

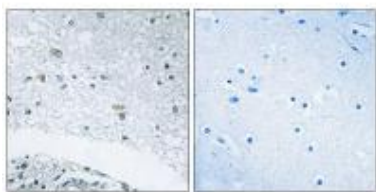
Immunohistochemistry: 1:50~1:100

Immunofluorescence: 1:100~1:500

Images



Western blot analysis of extracts from K562 cells and 3T3 cells, using LAMC3 antibody #34280.



Immunohistochemistry analysis of paraffin-embedded human brain tissue using LAMC3 antibody #34280.



Immunofluorescence analysis of LOVO cells, using LAMC3 antibody #34280.

Background

Binding to cells via a high affinity receptor, laminin is thought to mediate the attachment, migration and organization of cells into tissues during embryonic development by interacting with other extracellular matrix components.

Koch M., J. Cell Biol. 145:605-618(1999).

Humphray S.J., Nature 429:369-374(2004).

Note: This product is for in vitro research use only