

MGMT Antibody

Catalog No: #34286

Package Size: #34286-1 50ul #34286-2 100ul

Orders: order@signalwayantibody.comSupport: tech@signalwayantibody.com

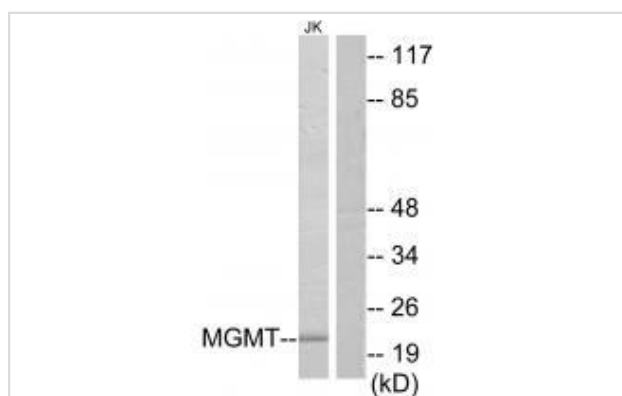
Description

Product Name	MGMT Antibody
Host Species	Rabbit
Clonality	Polyclonal
Purification	The antibody was affinity-purified from rabbit antiserum by affinity-chromatography using epitope-specific immunogen.
Applications	WB
Species Reactivity	Hu Rt
Specificity	The antibody detects endogenous levels of total MGMT protein.
Immunogen Type	Peptide
Immunogen Description	Synthesized peptide derived from internal of human MGMT.
Target Name	MGMT
Other Names	Methylated-DNA--protein-cysteine methyltransferase; EC 2.1.1.63; 6-O-methylguanine-DNA methyltransferase; MGMT;
Accession No.	Swiss-Prot: P16455NCBI Gene ID: 4255
Uniprot	P16455
GeneID	4255;
SDS-PAGE MW	22kd
Concentration	1.0mg/ml
Formulation	Rabbit IgG in phosphate buffered saline (without Mg ²⁺ and Ca ²⁺), pH 7.4, 150mM NaCl, 0.02% sodium azide and 50% glycerol.
Storage	Store at -20°C

Application Details

Western blotting: 1:500~1:3000

Images



Western blot analysis of extracts from Jurkat cells, using MGMT antibody #34286.

Background

Involved in the cellular defense against the biological effects of O6-methylguanine (O6-MeG) in DNA. Repairs alkylated guanine in DNA by stoichiometrically transferring the alkyl group at the O-6 position to a cysteine residue in the enzyme. This is a suicide reaction: the enzyme is irreversibly inactivated.

Tano K., Proc. Natl. Acad. Sci. U.S.A. 87:686-690(1990).

Rydberg B., J. Biol. Chem. 265:9563-9569(1990).

Koike G., J. Biol. Chem. 265:14754-14762(1990)

Note: This product is for in vitro research use only