

## ERG Antibody

Catalog No: #21480

Package Size: #21480-1 50ul #21480-2 100ul

Orders: [order@signalwayantibody.com](mailto:order@signalwayantibody.com)Support: [tech@signalwayantibody.com](mailto:tech@signalwayantibody.com)

## Description

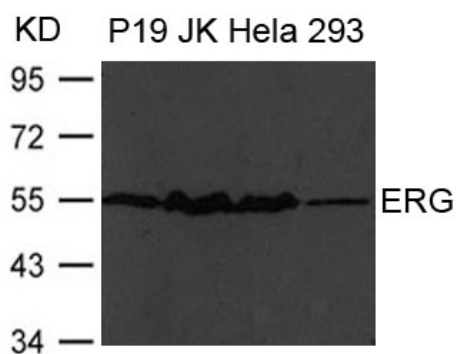
Product Name	ERG Antibody
Host Species	Rabbit
Clonality	Polyclonal
Purification	Antibodies were produced by immunizing rabbits with synthetic peptide and KLH conjugates. Antibodies were purified by affinity-chromatography using epitope-specific peptide.
Applications	WB
Species Reactivity	Hu Ms Rt
Specificity	The antibody detects endogenous level of total ERG protein.
Immunogen Type	Peptide-KLH
Immunogen Description	Peptide sequence around aa.84~88(G-S-R-N-S) derived from Human ERG.
Target Name	ERG
Other Names	p55; erg-3;
Accession No.	Swiss-Prot: P11308NCBI Protein: NP_891548.1
Uniprot	P11308
GeneID	2078;
Concentration	1.0mg/ml
Formulation	Supplied at 1.0mg/mL in phosphate buffered saline (without Mg <sup>2+</sup> and Ca <sup>2+</sup> ), pH 7.4, 150mM NaCl, 0.02% sodium azide and 50% glycerol.
Storage	Store at -20°C for long term preservation (recommended). Store at 4°C for short term use.

## Application Details

Predicted MW: 52 55kd

Western blotting: 1:500~1:1000

## Images



Western blot analysis of extract from P19, JK, Hela and 293 cells using ERG Antibody #21480

## Background

---

Transcriptional regulator. May participate in transcriptional regulation through the recruitment of SETDB1 histone methyltransferase and subsequent modification of local chromatin structure.

Joeson L., Vikesaa J., Krogh A., Nielsen L.K., Hansen T., Borup R., Johnsen A.H., Christiansen J., Nielsen F.C. Mol. Cell. Proteomics 6:798-811(2007)

---

Note: This product is for in vitro research use only