

STAT5A/B Antibody

Catalog No: #34302

Package Size: #34302-1 50ul #34302-2 100ul

Orders: order@signalwayantibody.comSupport: tech@signalwayantibody.com

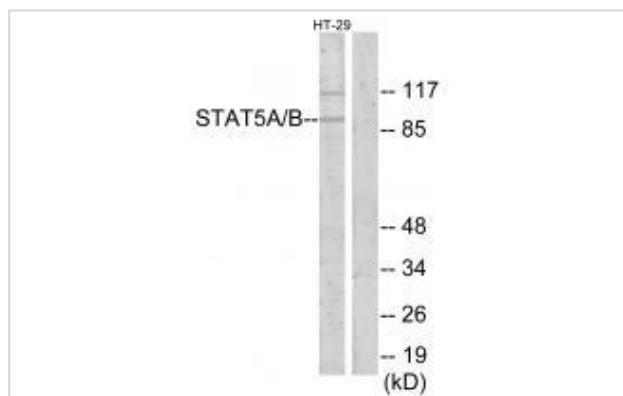
Description

Product Name	STAT5A/B Antibody
Host Species	Rabbit
Clonality	Polyclonal
Purification	The antibody was affinity-purified from rabbit antiserum by affinity-chromatography using epitope-specific immunogen.
Applications	WB
Species Reactivity	Hu Ms Rt
Specificity	The antibody detects endogenous levels of total STAT5A/B protein.
Immunogen Type	Peptide
Immunogen Description	Synthesized peptide derived from internal of human STAT5A/B.
Target Name	STAT5A/B
Other Names	Signal transducer and activator of transcription 5A; STAT5A; STAT5;
Accession No.	Swiss-Prot: P42229NCBI Gene ID: 6776/6777
Uniprot	P42229
GeneID	6776;
SDS-PAGE MW	90kd
Concentration	1.0mg/ml
Formulation	Rabbit IgG in phosphate buffered saline (without Mg ²⁺ and Ca ²⁺), pH 7.4, 150mM NaCl, 0.02% sodium azide and 50% glycerol.
Storage	Store at -20°C

Application Details

Western blotting: 1:500~1:3000

Images



Western blot analysis of extracts from HT-29 cells, using STAT5A/B antibody #34302.

Background

Carries out a dual function: signal transduction and activation of transcription. Mediates cellular responses to the cytokine KITLG/SCF and other growth factors. Mediates cellular responses to ERBB4. May mediate cellular responses to activated FGFR1, FGFR2, FGFR3 and FGFR4. Binds to the GAS element and activates PRL-induced transcription. Regulates the expression of milk proteins during lactation.

Hou J., Immunity 2:321-329(1995).

Litterst C.M., J. Biol. Chem. 278:45340-45351(2003).

Martens N., J. Biol. Chem. 280:13817-13823(2005).

Note: This product is for in vitro research use only