

## MRPL32 Antibody

Catalog No: #34324

Package Size: #34324-1 50ul #34324-2 100ul

Orders: [order@signalwayantibody.com](mailto:order@signalwayantibody.com)Support: [tech@signalwayantibody.com](mailto:tech@signalwayantibody.com)

## Description

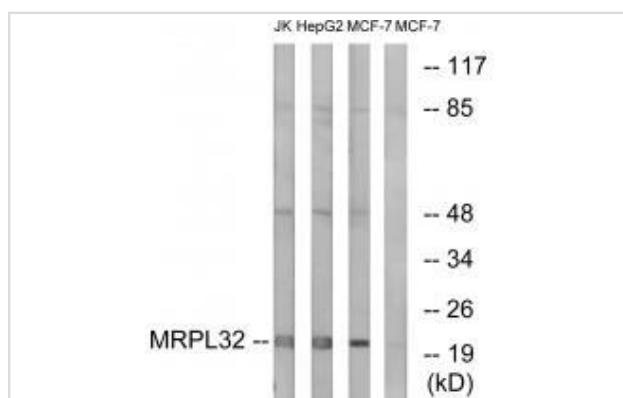
|                       |                                                                                                                                                    |
|-----------------------|----------------------------------------------------------------------------------------------------------------------------------------------------|
| Product Name          | MRPL32 Antibody                                                                                                                                    |
| Host Species          | Rabbit                                                                                                                                             |
| Clonality             | Polyclonal                                                                                                                                         |
| Purification          | The antibody was affinity-purified from rabbit antiserum by affinity-chromatography using epitope-specific immunogen.                              |
| Applications          | WB IF                                                                                                                                              |
| Species Reactivity    | Hu                                                                                                                                                 |
| Specificity           | The antibody detects endogenous levels of total MRPL32 protein.                                                                                    |
| Immunogen Type        | Peptide                                                                                                                                            |
| Immunogen Description | Synthesized peptide derived from internal of human MRPL32.                                                                                         |
| Target Name           | MRPL32                                                                                                                                             |
| Other Names           | 39S ribosomal protein L32; mitochondrial [Precursor]; L32mt; MRP-L32; HSPC283                                                                      |
| Accession No.         | Swiss-Prot: Q9BYC8NCBI Gene ID: 64983                                                                                                              |
| Uniprot               | Q9BYC8                                                                                                                                             |
| GeneID                | 64983;                                                                                                                                             |
| SDS-PAGE MW           | 21kd                                                                                                                                               |
| Concentration         | 1.0mg/ml                                                                                                                                           |
| Formulation           | Rabbit IgG in phosphate buffered saline (without Mg <sup>2+</sup> and Ca <sup>2+</sup> ), pH 7.4, 150mM NaCl, 0.02% sodium azide and 50% glycerol. |
| Storage               | Store at -20°C                                                                                                                                     |

## Application Details

Western blotting: 1:500~1:3000

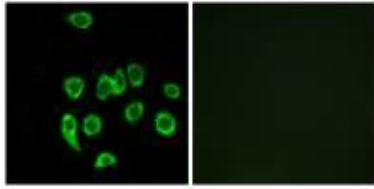
Immunofluorescence: 1:100~1:500

## Images



Western blot analysis of extracts from Jurkat cells, MCF-7 cells and HepG2 cells, using MRPL32 antibody #34324.

Immunofluorescence analysis of A549 cells, using MRPL32 antibody #34324.



## Background

Mammalian mitochondrial ribosomal proteins are encoded by nuclear genes and help in protein synthesis within the mitochondrion. Mitochondrial ribosomes (mitoribosomes) consist of a small 28S subunit and a large 39S subunit. They have an estimated 75% protein to rRNA composition compared to prokaryotic ribosomes, where this ratio is reversed. Another difference between mammalian mitoribosomes and prokaryotic ribosomes is that the latter contain a 5S rRNA. Among different species, the proteins comprising the mitoribosome differ greatly in sequence, and sometimes in biochemical properties, which prevents easy recognition by sequence homology. This gene encodes a 39S subunit protein that belongs to the L32 ribosomal protein family. A pseudogene corresponding to this gene is found on chromosome Xp.

Suzuki T., J. Biol. Chem. 276:21724-21736(2001).

The MGC Project Team; Genome Res. 14:2121-2127(2004).

Kenmochi N., Genomics 77:65-70(2001).

**Note:** This product is for in vitro research use only