

## DLK1 Antibody

Catalog No: #21483

Package Size: #21483-1 50ul #21483-2 100ul

Orders: [order@signalwayantibody.com](mailto:order@signalwayantibody.com)Support: [tech@signalwayantibody.com](mailto:tech@signalwayantibody.com)

## Description

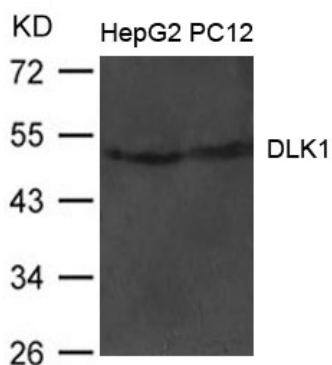
Product Name	DLK1 Antibody
Host Species	Rabbit
Clonality	Polyclonal
Purification	Antibodies were produced by immunizing rabbits with synthetic peptide and KLH conjugates. Antibodies were purified by affinity-chromatography using epitope-specific peptide.
Applications	WB
Species Reactivity	Hu
Specificity	The antibody detects endogenous level of total DLK1 protein.
Immunogen Type	Peptide-KLH
Immunogen Description	Peptide sequence around aa.375~379(S-K-E-A-G) derived from Human DLK1.
Target Name	DLK1
Other Names	FA1; ZOG; pG2; PREF1; Pref-1
Accession No.	Swiss-Prot: P80370NCBI Protein: NP_003827.3
Uniprot	P80370
GeneID	8788;
Concentration	1.0mg/ml
Formulation	Supplied at 1.0mg/mL in phosphate buffered saline (without Mg <sup>2+</sup> and Ca <sup>2+</sup> ), pH 7.4, 150mM NaCl, 0.02% sodium azide and 50% glycerol.
Storage	Store at -20°C for long term preservation (recommended). Store at 4°C for short term use.

## Application Details

Predicted MW: 51kd

Western blotting: 1:500~1:1000

## Images



Western blot analysis of extract from HepG2 and PC12 cells using DLK1 Antibody #21483

## Background

---

May have a role in neuroendocrine differentiation.

---

Note: This product is for in vitro research use only