

## HIBADH Antibody

Catalog No: #34327

Package Size: #34327-1 50ul #34327-2 100ul

Orders: [order@signalwayantibody.com](mailto:order@signalwayantibody.com)Support: [tech@signalwayantibody.com](mailto:tech@signalwayantibody.com)

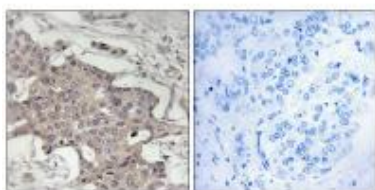
## Description

Product Name	HIBADH Antibody
Host Species	Rabbit
Clonality	Polyclonal
Purification	The antibody was affinity-purified from rabbit antiserum by affinity-chromatography using epitope-specific immunogen.
Applications	IHC
Species Reactivity	Hu Ms
Specificity	The antibody detects endogenous levels of total HIBADH protein.
Immunogen Type	Peptide
Immunogen Description	Synthesized peptide derived from C-terminal of human HIBADH.
Target Name	HIBADH
Other Names	3-hydroxyisobutyrate dehydrogenase; mitochondrial; EC 1.1.1.31; HIBADH;
Accession No.	Swiss-Prot: P31937NCBI Gene ID: 11112
Uniprot	P31937
GeneID	11112;
SDS-PAGE MW	35kd
Concentration	1.0mg/ml
Formulation	Rabbit IgG in phosphate buffered saline (without Mg <sup>2+</sup> and Ca <sup>2+</sup> ), pH 7.4, 150mM NaCl, 0.02% sodium azide and 50% glycerol.
Storage	Store at -20°C

## Application Details

Immunohistochemistry: 1:50~1:100

## Images



Immunohistochemistry analysis of paraffin-embedded human breast carcinoma tissue using HIBADH antibody #34327.

## Background

---

This gene encodes a mitochondrial 3-hydroxyisobutyrate dehydrogenase enzyme. The encoded protein plays a critical role in the catabolism of L-valine by catalyzing the oxidation of 3-hydroxyisobutyrate to methylmalonate semialdehyde.

Hillier L.W., Nature 424:157-164(2003).

Hughes G.J., Electrophoresis 14:1216-1222(1993).

Structural genomics consortium (SGC); Submitted (APR-2006) to the PDB data bank.

---

Note: This product is for in vitro research use only