

## RPS11 Antibody

Catalog No: #34328

Package Size: #34328-1 50ul #34328-2 100ul

Orders: [order@signalwayantibody.com](mailto:order@signalwayantibody.com)Support: [tech@signalwayantibody.com](mailto:tech@signalwayantibody.com)

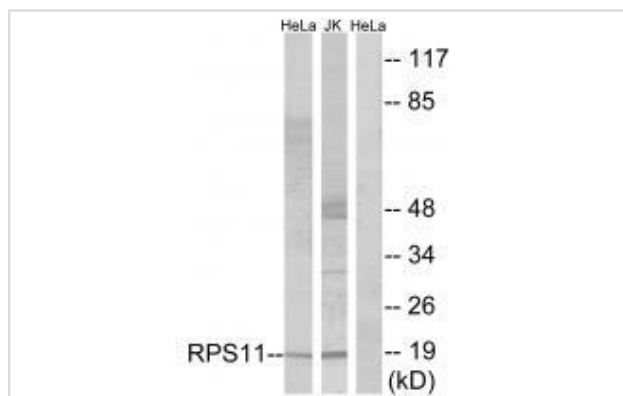
## Description

Product Name	RPS11 Antibody
Host Species	Rabbit
Clonality	Polyclonal
Purification	The antibody was affinity-purified from rabbit antiserum by affinity-chromatography using epitope-specific immunogen.
Applications	WB
Species Reactivity	Hu Ms Rt
Specificity	The antibody detects endogenous levels of total RPS11 protein.
Immunogen Type	Peptide
Immunogen Description	Synthesized peptide derived from internal of human RPS11.
Target Name	RPS11
Other Names	40S ribosomal protein S11; ribosomal protein S11; RS11;
Accession No.	Swiss-Prot: P62280NCBI Gene ID: 6205
Uniprot	P62280
GeneID	6205;
SDS-PAGE MW	18kd
Concentration	1.0mg/ml
Formulation	Rabbit IgG in phosphate buffered saline (without Mg <sup>2+</sup> and Ca <sup>2+</sup> ), pH 7.4, 150mM NaCl, 0.02% sodium azide and 50% glycerol.
Storage	Store at -20°C

## Application Details

Western blotting: 1:500~1:3000

## Images



Western blot analysis of extracts from HeLa cells and Jurkat cells, using RPS11 antibody #34328.

## Background

Ribosomes, the organelles that catalyze protein synthesis, consist of a small 40S subunit and a large 60S subunit. Together these subunits are composed of 4 RNA species and approximately 80 structurally distinct proteins. This gene encodes a member of the S17P family of ribosomal proteins that is a component of the 40S subunit. This gene is co-transcribed with the small nucleolar RNA gene U35B, which is located in the third intron. As is typical for genes encoding ribosomal proteins, there are multiple processed pseudogenes of this gene dispersed throughout the genome.

Lott J.B., Nucleic Acids Res. 16:1205-1205(1988).

Higa S., Gene 240:371-377(1999).

The MGC Project Team; Genome Res. 14:2121-2127(2004).

---

Note: This product is for in vitro research use only