

## RPS18 Antibody

Catalog No: #34331

Package Size: #34331-1 50ul #34331-2 100ul

Orders: [order@signalwayantibody.com](mailto:order@signalwayantibody.com)Support: [tech@signalwayantibody.com](mailto:tech@signalwayantibody.com)

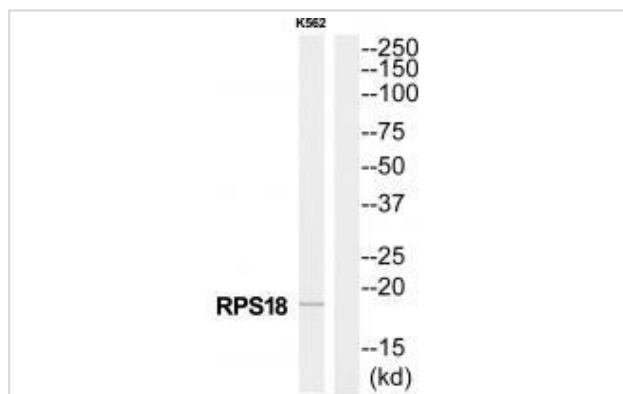
## Description

Product Name	RPS18 Antibody
Host Species	Rabbit
Clonality	Polyclonal
Purification	The antibody was affinity-purified from rabbit antiserum by affinity-chromatography using epitope-specific immunogen.
Applications	WB
Species Reactivity	Hu Ms Rt
Specificity	The antibody detects endogenous levels of total RPS18 protein.
Immunogen Type	Peptide
Immunogen Description	Synthesized peptide derived from Internal of human RPS18.
Target Name	RPS18
Other Names	40S ribosomal protein S18; D6S218E; HKE3; Ke-3; Ke3
Accession No.	Swiss-Prot: P62269NCBI Gene ID: 10013055/6222
Uniprot	P62269
GeneID	6222;
SDS-PAGE MW	18kd
Concentration	1.0mg/ml
Formulation	Rabbit IgG in phosphate buffered saline (without Mg <sup>2+</sup> and Ca <sup>2+</sup> ), pH 7.4, 150mM NaCl, 0.02% sodium azide and 50% glycerol.
Storage	Store at -20°C

## Application Details

Western blotting: 1:500~1:3000

## Images



Western blot analysis of extracts from K562 cells, using RPS18 antibody #34331.

## Background

---

Located at the top of the head of the 40S subunit, it contacts several helices of the 18S rRNA By similarity. HAMAP-Rule MF\_01315

Chassin D., Nucleic Acids Res. 21:745-745(1993).

Mungall A.J., Nature 425:805-811(2003).

Vladimirov S.N., Eur. J. Biochem. 239:144-149(1996).

---

Note: This product is for in vitro research use only