

RPS20 Antibody

Catalog No: #34335

Package Size: #34335-1 50ul #34335-2 100ul

Orders: order@signalwayantibody.comSupport: tech@signalwayantibody.com

Description

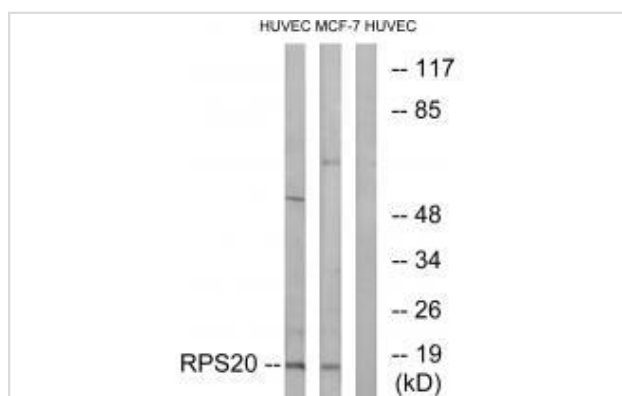
Product Name	RPS20 Antibody
Host Species	Rabbit
Clonality	Polyclonal
Purification	The antibody was affinity-purified from rabbit antiserum by affinity-chromatography using epitope-specific immunogen.
Applications	WB IF
Species Reactivity	Hu Ms Rt
Specificity	The antibody detects endogenous levels of total RPS20 protein.
Immunogen Type	Peptide
Immunogen Description	Synthesized peptide derived from internal of human RPS20.
Target Name	RPS20
Other Names	40S ribosomal protein S20; RS20;
Accession No.	Swiss-Prot: P60866NCBI Gene ID: 6224
Uniprot	P60866
GeneID	6224;
SDS-PAGE MW	13kd
Concentration	1.0mg/ml
Formulation	Rabbit IgG in phosphate buffered saline (without Mg ²⁺ and Ca ²⁺), pH 7.4, 150mM NaCl, 0.02% sodium azide and 50% glycerol.
Storage	Store at -20°C

Application Details

Western blotting: 1:500~1:3000

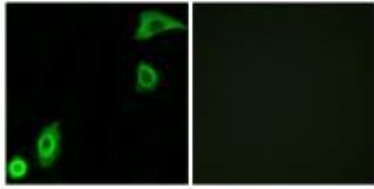
Immunofluorescence: 1:100~1:500

Images



Western blot analysis of extracts from HUVEC cells and MCF-7 cells, using RPS20 antibody #34335.

Immunofluorescence analysis of A549 cells, using RPS20 antibody #34335.



Background

Ribosomes, the organelles that catalyze protein synthesis, consist of a small 40S subunit and a large 60S subunit. Together these subunits are composed of 4 RNA species and approximately 80 structurally distinct proteins. This gene encodes a ribosomal protein that is a component of the 40S subunit. The protein belongs to the S10P family of ribosomal proteins. It is located in the cytoplasm. This gene is co-transcribed with the small nucleolar RNA gene U54, which is located in its second intron. As is typical for genes encoding ribosomal proteins, there are multiple processed pseudogenes of this gene dispersed through the genome. Two transcript variants encoding different isoforms have been identified for this gene.

Chu W., Nucleic Acids Res. 21:1672-1672(1993).

Yoshihama M., Genome Res. 12:379-390(2002).

The MGC Project Team; Genome Res. 14:2121-2127(2004).

Note: This product is for in vitro research use only