

RPS25 Antibody

Catalog No: #34337

Package Size: #34337-1 50ul #34337-2 100ul

Orders: order@signalwayantibody.comSupport: tech@signalwayantibody.com

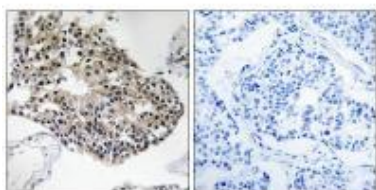
Description

Product Name	RPS25 Antibody
Host Species	Rabbit
Clonality	Polyclonal
Purification	The antibody was affinity-purified from rabbit antiserum by affinity-chromatography using epitope-specific immunogen.
Applications	IHC
Species Reactivity	Hu Ms
Specificity	The antibody detects endogenous levels of total RPS25 protein.
Immunogen Type	Peptide
Immunogen Description	Synthesized peptide derived from internal of human RPS25.
Target Name	RPS25
Other Names	40S ribosomal protein S25;
Accession No.	Swiss-Prot: P62851NCBI Gene ID: 6230
Uniprot	P62851
GeneID	6230;
SDS-PAGE MW	14kd
Concentration	1.0mg/ml
Formulation	Rabbit IgG in phosphate buffered saline (without Mg ²⁺ and Ca ²⁺), pH 7.4, 150mM NaCl, 0.02% sodium azide and 50% glycerol.
Storage	Store at -20°C

Application Details

Immunohistochemistry: 1:50~1:100

Images



Immunohistochemistry analysis of paraffin-embedded human breast carcinoma tissue using RPS25 antibody #34337.

Background

Ribosomes, the organelles that catalyze protein synthesis, consist of a small 40S subunit and a large 60S subunit. Together these subunits are composed of 4 RNA species and approximately 80 structurally distinct proteins. This gene encodes a ribosomal protein that is a component of the 40S subunit. The protein belongs to the S25E family of ribosomal proteins. It is located in the cytoplasm. As is typical for genes encoding ribosomal proteins, there are multiple processed pseudogenes of this gene dispersed through the genome.

Yoshihama M., Genome Res. 12:379-390(2002).

Li M., Gene 107:329-333(1991).

Vladimirov S.N., Eur. J. Biochem. 239:144-149(1996).

Note: This product is for in vitro research use only