

## RPL26L Antibody

Catalog No: #34350

Package Size: #34350-1 50ul #34350-2 100ul

Orders: [order@signalwayantibody.com](mailto:order@signalwayantibody.com)Support: [tech@signalwayantibody.com](mailto:tech@signalwayantibody.com)

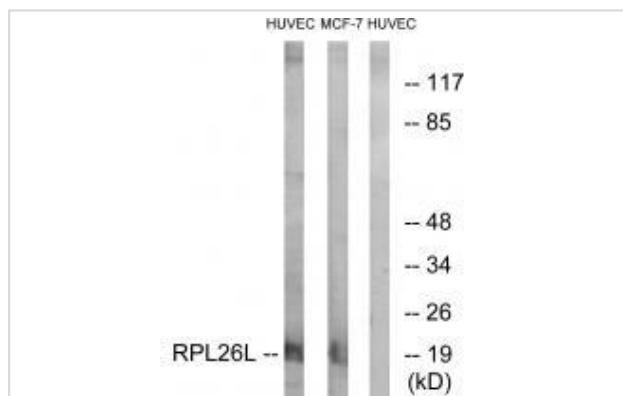
## Description

Product Name	RPL26L Antibody
Host Species	Rabbit
Clonality	Polyclonal
Purification	The antibody was affinity-purified from rabbit antiserum by affinity-chromatography using epitope-specific immunogen.
Applications	WB
Species Reactivity	Hu Ms Rt
Specificity	The antibody detects endogenous levels of total RPL26L protein.
Immunogen Type	Peptide
Immunogen Description	Synthesized peptide derived from C-terminal of human RPL26L.
Target Name	RPL26L
Other Names	60S ribosomal protein L26-like 1; RPL26L1; RPL26P1;
Accession No.	Swiss-Prot: Q9UNX3NCBI Gene ID: 51121
Uniprot	Q9UNX3
GeneID	51121;
SDS-PAGE MW	20kd
Concentration	1.0mg/ml
Formulation	Rabbit IgG in phosphate buffered saline (without Mg <sup>2+</sup> and Ca <sup>2+</sup> ), pH 7.4, 150mM NaCl, 0.02% sodium azide and 50% glycerol.
Storage	Store at -20°C

## Application Details

Western blotting: 1:500~1:3000

## Images



Western blot analysis of extracts from HUVEC cells and MCF-7 cells, using RPL26L antibody #34350.

## Background

---

This gene encodes a protein that shares high sequence similarity with ribosomal protein L26. It is not currently known whether the encoded protein is a functional ribosomal protein or whether it has evolved a function that is independent of the ribosome. Transcript variants utilizing alternative polyA signals exist.

Zhang Q.-H., Genome Res. 10:1546-1560(2000).

The MGC Project Team; Genome Res. 14:2121-2127(2004).

---

Note: This product is for in vitro research use only