

RPL30 Antibody

Catalog No: #34354



Package Size: #34354-1 50ul #34354-2 100ul

Orders: order@signalwayantibody.com
Support: tech@signalwayantibody.com

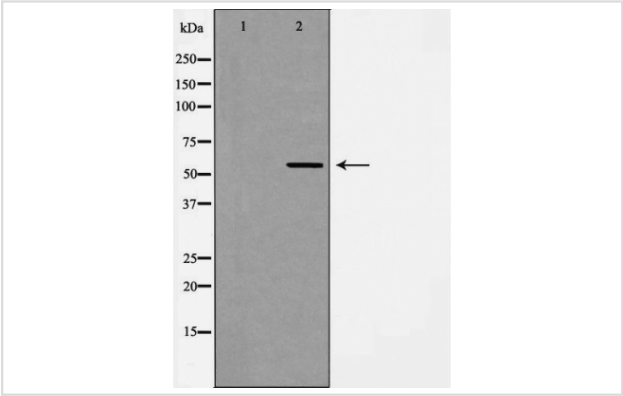
Description

Product Name	RPL30 Antibody
Host Species	Rabbit
Clonality	Polyclonal
Purification	The antibody was affinity-purified from rabbit antiserum by affinity-chromatography using epitope-specific immunogen.
Applications	WB IHC
Species Reactivity	Hu Ms Rt
Specificity	The antibody detects endogenous levels of total RPL30 protein.
Immunogen Type	Peptide
Immunogen Description	A synthesized peptide of human Angiopoietin 2
Target Name	RPL30
Other Names	60S ribosomal protein L30; RL30;
Accession No.	Swiss-Prot: P62888NCBI Gene ID: 6156
Uniprot	P62888
GeneID	6156;
SDS-PAGE MW	13kd
Concentration	1mg/ml
Formulation	Rabbit IgG in phosphate buffered saline , pH 7.4, 150mM NaCl, 0.02% sodium azide and 50% glycerol.
Storage	Store at -20°C

Application Details

Western blotting: 1:500~1:3000
Immunohistochemistry: 1:50~1:100

Images



Western blot analysis of ANG 2 expression in HUVEC cell lysate. The lane on the left is treated with the antigen-specific peptide.

Background

Ribosomes, the organelles that catalyze protein synthesis, consist of a small 40S subunit and a large 60S subunit. Together these subunits are composed of 4 RNA species and approximately 80 structurally distinct proteins. This gene encodes a ribosomal protein that is a component of the 60S subunit. The protein belongs to the L30E family of ribosomal proteins. It is located in the cytoplasm. This gene is co-transcribed with the U72 small nucleolar RNA gene, which is located in its fourth intron. As is typical for genes encoding ribosomal proteins, there are multiple processed pseudogenes of this gene dispersed through the genome.

Beausoleil S.A., Nat. Biotechnol. 24:1285-1292(2006).

Yoshihama M., Genome Res. 12:379-390(2002).

The MGC Project Team; Genome Res. 14:2121-2127(2004).

Note: This product is for in vitro research use only