

## RL39L Antibody

Catalog No: #34360

Package Size: #34360-1 50ul #34360-2 100ul

Orders: [order@signalwayantibody.com](mailto:order@signalwayantibody.com)Support: [tech@signalwayantibody.com](mailto:tech@signalwayantibody.com)

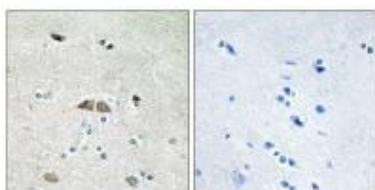
## Description

Product Name	RL39L Antibody
Host Species	Rabbit
Clonality	Polyclonal
Purification	The antibody was affinity-purified from rabbit antiserum by affinity-chromatography using epitope-specific immunogen.
Applications	IHC
Species Reactivity	Hu
Specificity	The antibody detects endogenous levels of total RL39L protein.
Immunogen Type	Peptide
Immunogen Description	Synthesized peptide derived from internal of human RL39L.
Target Name	RL39L
Other Names	60S ribosomal protein L39-like; L39-2;
Accession No.	Swiss-Prot: Q96EH5NCBI Gene ID: 116832
Uniprot	Q96EH5
GeneID	116832;
SDS-PAGE MW	6kd
Concentration	1.0mg/ml
Formulation	Rabbit IgG in phosphate buffered saline (without Mg <sup>2+</sup> and Ca <sup>2+</sup> ), pH 7.4, 150mM NaCl, 0.02% sodium azide and 50% glycerol.
Storage	Store at -20°C

## Application Details

Immunohistochemistry: 1:50~1:100

## Images



Immunohistochemistry analysis of paraffin-embedded human brain tissue using RL39L antibody #34360.

## Background

---

This gene encodes a protein sharing high sequence similarity with ribosomal protein L39. Although the name of this gene has been referred to as 'ribosomal protein L39' in the public databases, its official name is 'ribosomal protein L39-like'. It is not currently known whether the encoded protein is a functional ribosomal protein or whether it has evolved a function that is independent of the ribosome.

Nadano D., *Biochim. Biophys. Acta* 1577:430-436(2002).

Uechi T., *Nucleic Acids Res.* 30:5369-5375(2002).

The MGC Project Team; *Genome Res.* 14:2121-2127(2004).

---

**Note:** This product is for in vitro research use only