

RPL3L Antibody

Catalog No: #34361

Package Size: #34361-1 50ul #34361-2 100ul

Orders: order@signalwayantibody.comSupport: tech@signalwayantibody.com

Description

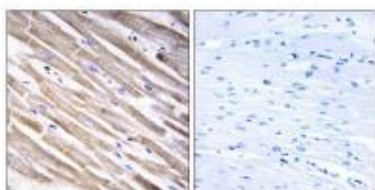
Product Name	RPL3L Antibody
Host Species	Rabbit
Clonality	Polyclonal
Purification	The antibody was affinity-purified from rabbit antiserum by affinity-chromatography using epitope-specific immunogen.
Applications	IHC IF
Species Reactivity	Hu
Specificity	The antibody detects endogenous levels of total RPL3L protein.
Immunogen Type	Peptide
Immunogen Description	Synthesized peptide derived from internal of human RPL3L.
Target Name	RPL3L
Other Names	60S ribosomal protein L3-like;
Accession No.	Swiss-Prot: Q92901NCBI Gene ID: 6123
Uniprot	Q92901
GeneID	6123;
SDS-PAGE MW	46kd
Concentration	1.0mg/ml
Formulation	Rabbit IgG in phosphate buffered saline (without Mg ²⁺ and Ca ²⁺), pH 7.4, 150mM NaCl, 0.02% sodium azide and 50% glycerol.
Storage	Store at -20°C

Application Details

Immunohistochemistry: 1:50~1:100

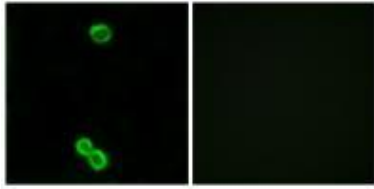
Immunofluorescence: 1:100~1:500

Images



Immunohistochemistry analysis of paraffin-embedded human heart tissue using RPL3L antibody #34361.

Immunofluorescence analysis of MCF-7 cells, using RPL3L antibody #34361.



Background

This gene encodes a protein that shares sequence similarity with ribosomal protein L3. The protein belongs to the L3P family of ribosomal proteins. Unlike the ubiquitous expression of ribosomal protein genes, this gene has a tissue-specific pattern of expression, with the highest levels of expression in skeletal muscle and heart. It is not currently known whether the encoded protein is a functional ribosomal protein or whether it has evolved a function that is independent of the ribosome.

van Raay T.J., Genomics 37:172-176(1996).

Daniels R.J., Hum. Mol. Genet. 10:339-352(2001).

The MGC Project Team; Genome Res. 14:2121-2127(2004).

Note: This product is for in vitro research use only