

## ACBD6 Antibody

Catalog No: #34378

Package Size: #34378-1 50ul #34378-2 100ul

Orders: [order@signalwayantibody.com](mailto:order@signalwayantibody.com)Support: [tech@signalwayantibody.com](mailto:tech@signalwayantibody.com)

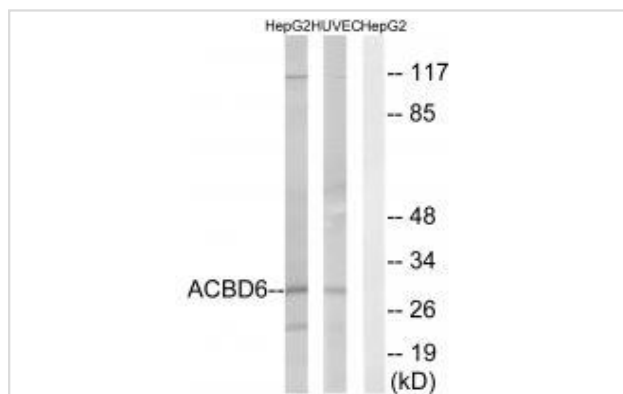
## Description

Product Name	ACBD6 Antibody
Host Species	Rabbit
Clonality	Polyclonal
Purification	The antibody was affinity-purified from rabbit antiserum by affinity-chromatography using epitope-specific immunogen.
Applications	WB
Species Reactivity	Hu Ms Rt
Specificity	The antibody detects endogenous levels of total ACBD6 protein
Immunogen Type	Peptide
Immunogen Description	Synthesized peptide derived from internal of human ACBD6.
Target Name	ACBD6
Other Names	acyl-CoA-binding domain-containing 6;
Accession No.	Swiss-Prot: Q9BR61NCBI Gene ID: 84320
Uniprot	Q9BR61
GeneID	84320;
SDS-PAGE MW	30kd
Concentration	1.0mg/ml
Formulation	Rabbit IgG in phosphate buffered saline (without Mg <sup>2+</sup> and Ca <sup>2+</sup> ), pH 7.4, 150mM NaCl, 0.02% sodium azide and 50% glycerol.
Storage	Store at -20°C

## Application Details

Western blotting: 1:500~1:3000

## Images



Western blot analysis of extracts from HepG2 cells and HUVEC cells, using ACBD6 antibody #34378.

## Background

---

Binds long-chain acyl-coenzyme A molecules with a strong preference for unsaturated C18:1-CoA, lower affinity for unsaturated C20:4-CoA, and very weak affinity for saturated C16:0-CoA. Does not bind fatty acids.

Gregory S.G., Nature 441:315-321(2006).

The MGC Project Team; Genome Res. 14:2121-2127(2004).

RIKEN structural genomics initiative (RSGI); Submitted (NOV-2005) to the PDB data bank.

---

Note: This product is for in vitro research use only