

## ARF6 Antibody

Catalog No: #34392

Package Size: #34392-1 50ul #34392-2 100ul

Orders: [order@signalwayantibody.com](mailto:order@signalwayantibody.com)Support: [tech@signalwayantibody.com](mailto:tech@signalwayantibody.com)

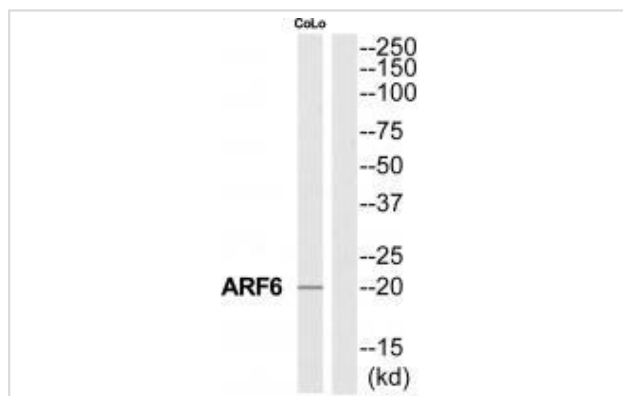
## Description

Product Name	ARF6 Antibody
Host Species	Rabbit
Clonality	Polyclonal
Purification	The antibody was affinity-purified from rabbit antiserum by affinity-chromatography using epitope-specific immunogen.
Applications	WB
Species Reactivity	Hu Ms Rt
Specificity	The antibody detects endogenous levels of total ARF6 protein.
Immunogen Type	Peptide
Immunogen Description	Synthesized peptide derived from Internal of human ARF6.
Target Name	ARF6
Other Names	ADP-ribosylation factor 6; ARF6; DKFZp564M0264;
Accession No.	Swiss-Prot: P62330NCBI Gene ID: 382
Uniprot	P62330
GeneID	382;
SDS-PAGE MW	20kd
Concentration	1.0mg/ml
Formulation	Rabbit IgG in phosphate buffered saline (without Mg <sup>2+</sup> and Ca <sup>2+</sup> ), pH 7.4, 150mM NaCl, 0.02% sodium azide and 50% glycerol.
Storage	Store at -20°C

## Application Details

Western blotting: 1:500~1:3000

## Images



Western blot analysis of extracts from COLO205 cells, using ARF6 antibody #34392.

## Background

GTP-binding protein involved in protein trafficking that regulates endocytic recycling and cytoskeleton remodeling. Required for normal completion of mitotic cytokinesis. Plays a role in the reorganization of the actin cytoskeleton and the formation of stress fibers. May also modulate vesicle budding and uncoating within the Golgi apparatus. Involved in the regulation of dendritic spine development, contributing to the regulation of dendritic branching and filopodia extension. Functions as an allosteric activator of the cholera toxin catalytic subunit, an ADP-ribosyltransferase.

Tsuchiya M., J. Biol. Chem. 266:2772-2777(1991).

Mao M., Proc. Natl. Acad. Sci. U.S.A. 95:8175-8180(1998).

Puhl H.L. III, Submitted (MAR-2002) to the EMBL/GenBank/DDBJ databases.

---

Note: This product is for in vitro research use only